

This latest release of the SeisTW user interface software for the ABEM Terraloc Pro 2 brings increased stability and a number of bug fixes to improve the user experience. Please report any issues you may have to: support@guidelinegeo.com

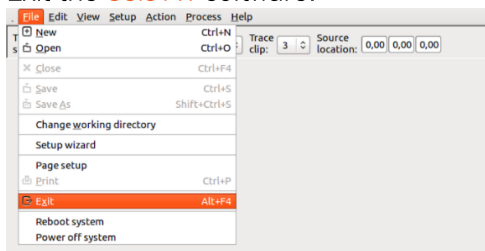
YOU WILL NEED

- USB mouse
- USB keyboard
- the office power supply – ensure the instrument is plugged in during the installation
- the three installation files ([lubuntu-rc.xml](#), [tpro2release.sh](#) & [terraloc-linux-1.0.28.tar.gz](#)) on a USB memory stick

NOTE The Linux operating system is case sensitive so it is important to follow the instructions exactly.

INSTALLATION INSTRUCTIONS

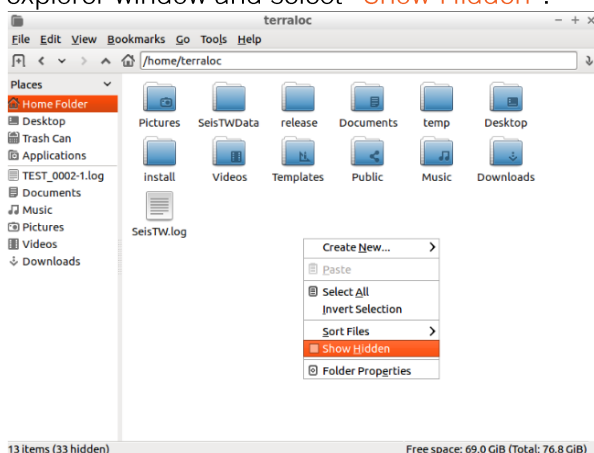
1. Exit the **SeisTW** software.



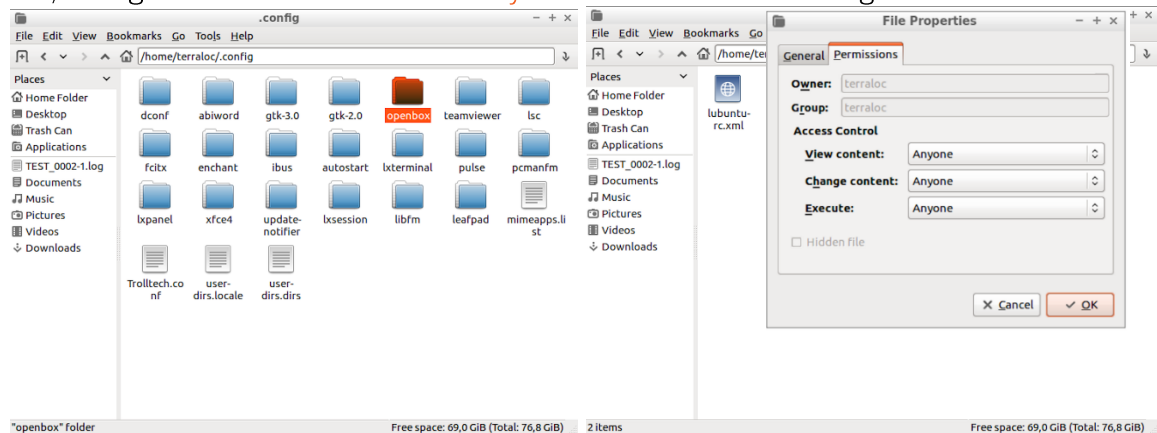
2. Open up the file explorer – the easiest way is to double-click on the “Recycle Bin”.



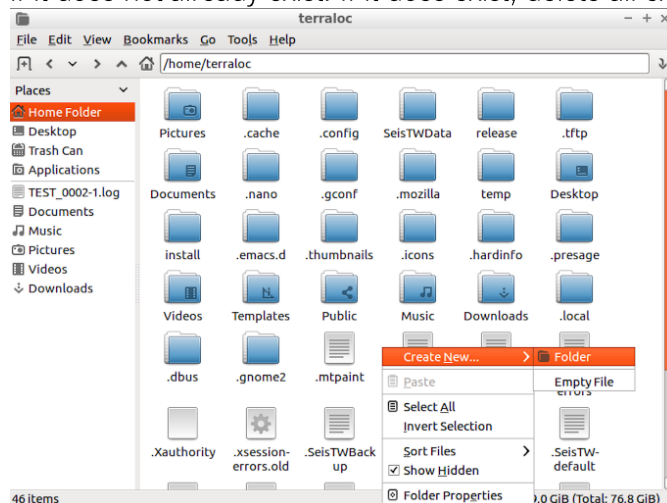
3. Select the “Home Folder” and ensure that hidden files are visible – right click in the file explorer window and select “Show Hidden”.



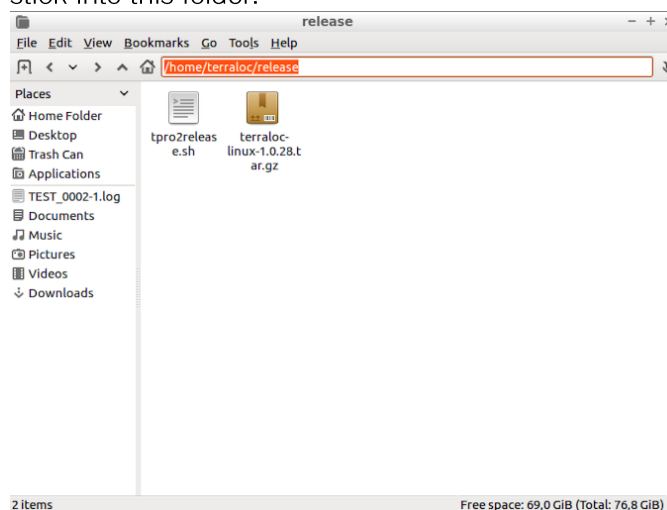
- Navigate to `/home/terraloc/.config/openbox` and copy the file `ubuntu-rc.xml` from the installation files on your USB stick into this folder, overwriting the previous version. Now **right mouse click** on the file, select **Properties** from the menu and then, on the **Permissions** tab, change the **Access Control** to **Anyone** in all three of the categories.



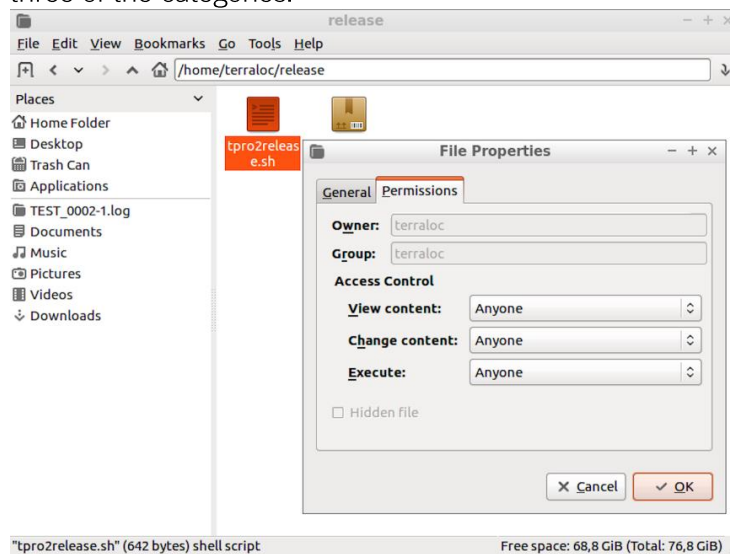
- Return to `/home/terraloc` and from the **right click** menu, create a new folder called **release** if it does not already exist. If it does exist, delete all existing content.



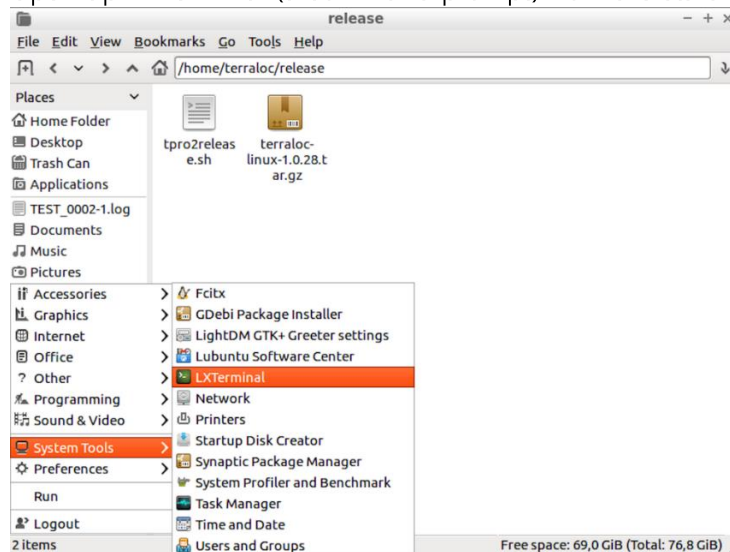
- Copy the remaining two files (`tpo2release.sh` & `terraloc-linux-1.0.28.tar.gz`) from the USB stick into this folder.



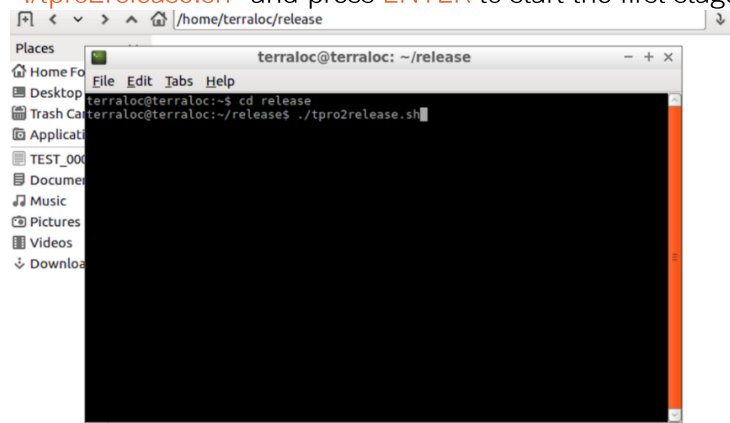
7. Select the files and use a **right mouse click** to bring up a menu; select “**Properties**” from the menu and then, on the “**Permissions**” tab, change the “**Access Control**” to “**Anyone**” in all three of the categories.



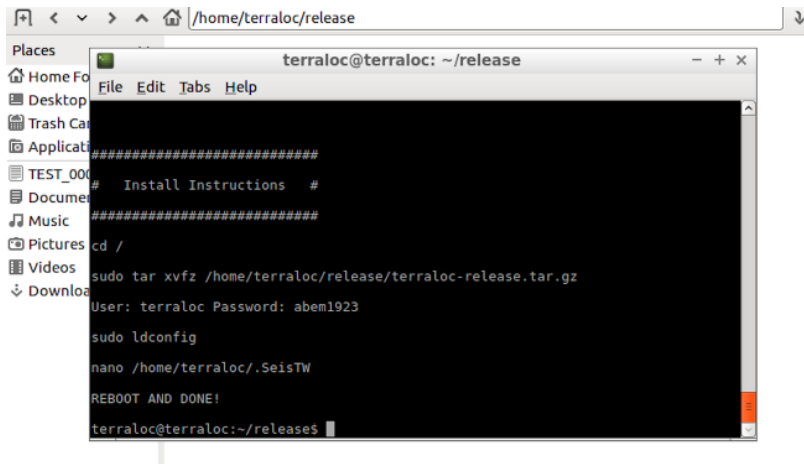
8. Open up LXTerminal (a command prompt) from the start menu.



9. In the LXTerminal window (see below), type “**cd release**” and press **ENTER**, this will direct LXTerminal to the “release” folder you just created. On the new line type the command “**./tpro2release.sh**” and press **ENTER** to start the first stage of installation.

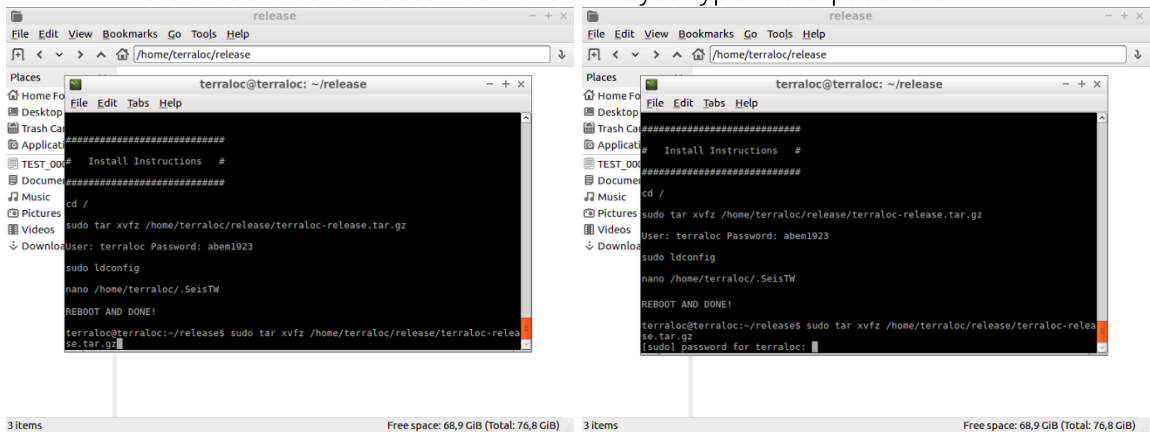


10. After running the `tpo2release` command, further instructions will be shown on screen. These should be completed one line at a time, pressing **ENTER** after typing each command starting with “`cd /`”.



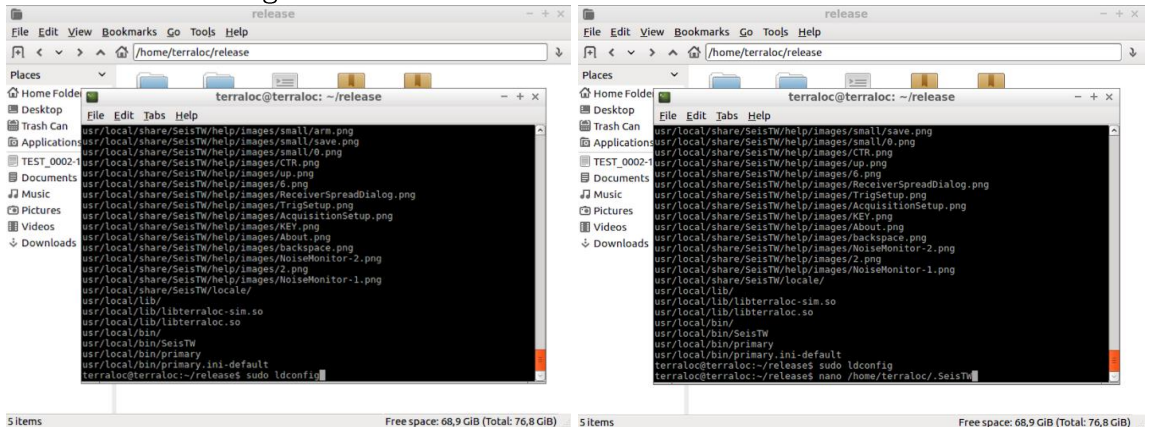
```
terraloc@terraloc: ~/release
File Edit Tabs Help
#####
# Install Instructions #
#####
cd /
sudo tar xvfz /home/terraloc/release/terraloc-release.tar.gz
User: terraloc Password: abem1923
sudo ldconfig
nano /home/terraloc/.SeisTW
REBOOT AND DONE!
terraloc@terraloc:~/release$
```

11. Follow the first part of the instructions and type “`sudo tar xvfz /home/terraloc/release/terraloc-release.tar.gz`” followed by **ENTER**, and then type in the password “`abem1923`” followed by **ENTER** – note that the cursor does not move while you type in the password.



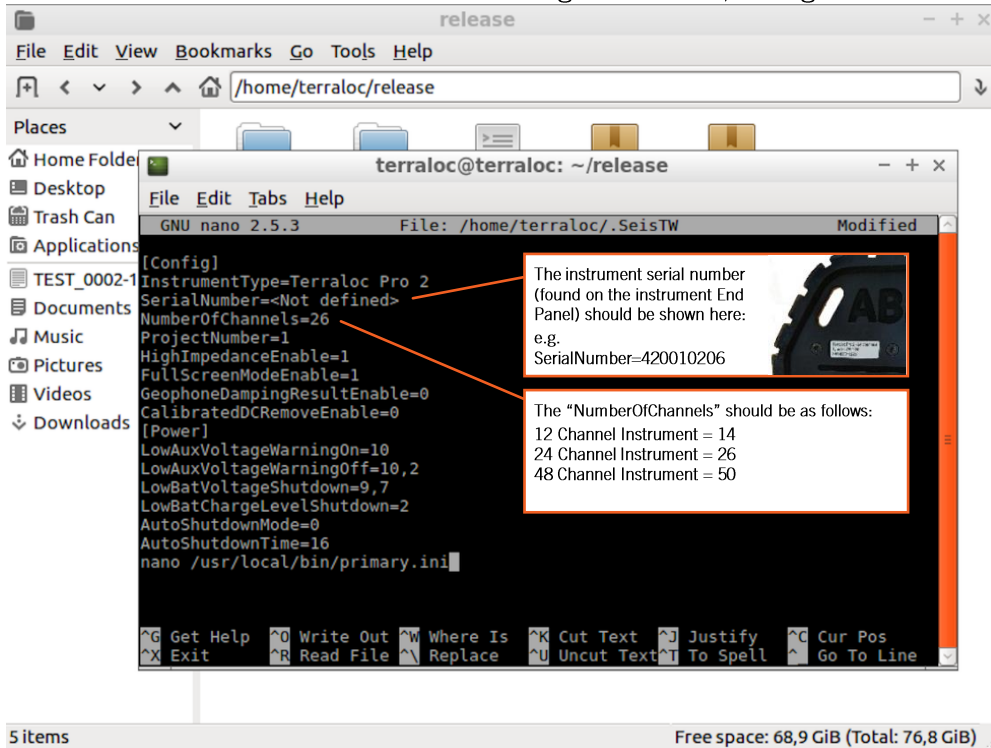
```
terraloc@terraloc: ~/release
File Edit Tabs Help
#####
# Install Instructions #
#####
cd /
sudo tar xvfz /home/terraloc/release/terraloc-release.tar.gz
User: terraloc Password: abem1923
sudo ldconfig
nano /home/terraloc/.SeisTW
REBOOT AND DONE!
terraloc@terraloc:~/release$ sudo tar xvfz /home/terraloc/release/terraloc-release.tar.gz
[sudo] password for terraloc: 
```

12. Complete the next step in the instructions by typing “`sudo ldconfig`” followed by **ENTER**, then complete the final step by typing “`nano /home/Terraloc/.SeisTW`” followed by **ENTER**, to view the instrument settings file.

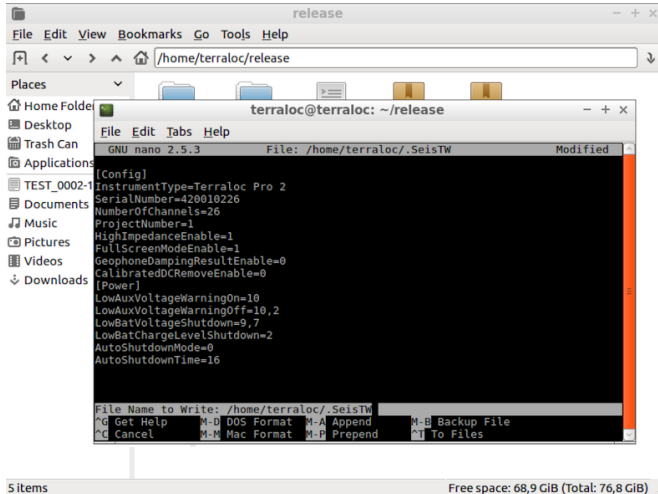


```
terraloc@terraloc: ~/release
File Edit View Bookmarks Go Tools Help
#####
# Install Instructions #
#####
cd /
sudo tar xvfz /home/terraloc/release/terraloc-release.tar.gz
User: terraloc Password: abem1923
sudo ldconfig
nano /home/terraloc/.SeisTW
REBOOT AND DONE!
terraloc@terraloc:~/release$ sudo ldconfig
terraloc@terraloc:~/release$ nano /home/terraloc/.SeisTW
```

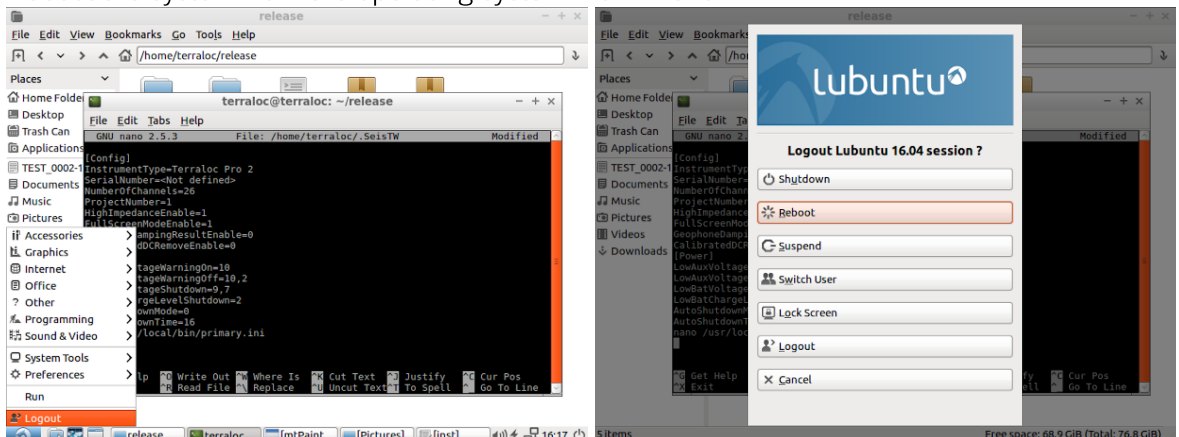
13. If either of the items shown below are missing or incorrect, change them here.



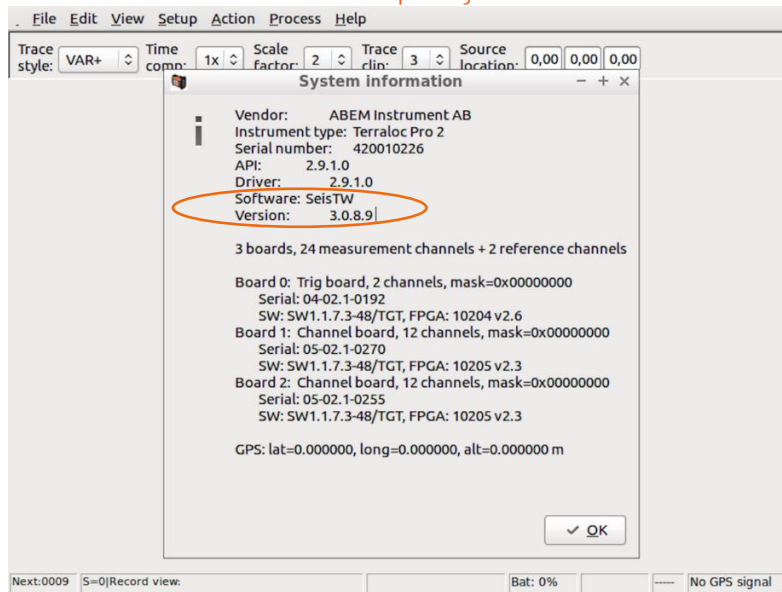
14. If the two entries are correct, go to **STEP 15**; if any items need editing, use the arrow keys to move through the text and enter the correct values. **DO NOT CHANGE ANYTHING ELSE**. Save the edited file with **CTRL+O** at the same time and then press **ENTER** to overwrite the old file.



15. Reboot the system from the operating system main menu.



16. After the instrument has restarted, double check that the installation has worked by looking at the software version in the “**Help > System Information**” menu.



RELEASE NOTES FOR v.3.0.8.9

- system settings (incl. channel numbers) automatically recovered after a sudden shutdown
- roll-along automatic move-ups and channel selection corrected
- the Accept/Reject buttons are now mouse-selectable and have shortcut key notes
- correct frequency returned during geophone test for all sample rates
- the Alt-Space shortcut to access the top menu (File Edit View etc.) is reinstated
- no unexpected shut-down on accessing “Preferences” menu
- improve settings in Wizard mode

GUIDELINEGEO | ABEM | MALÅ

GUIDELINE GEO has been in the geophysics business since 1923 and is the global leader in near-surface geotechnology. Our advanced technology ensures practical solutions to everyday, societal, and global problems. We deliver total solutions in the technological fields of ground penetrating radar, seismic, geoelectrical and electromagnetic measurement. The Guideline Geo AB share (GGEO) is listed on Nasdaq First North Growth Market. We are a Swedish company with international offices and regional partners serving clients in over 100 countries.

VISIT US AT GUIDELINEGEO.COM