



Quick Guide MALÅ Controller App

Items needed

- A compatible Android mobile device
- An App-Enabled antenna.
- The MALÅ Controller App package.

Installation

Scan the QR code and install the app (provided as an apk. file) on your Android mobile device.


APP-ENABLED

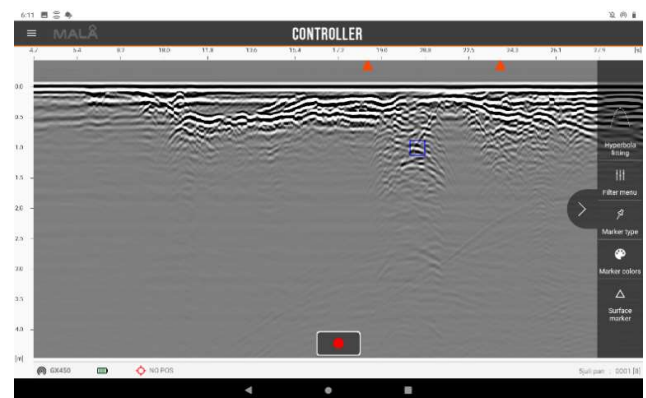
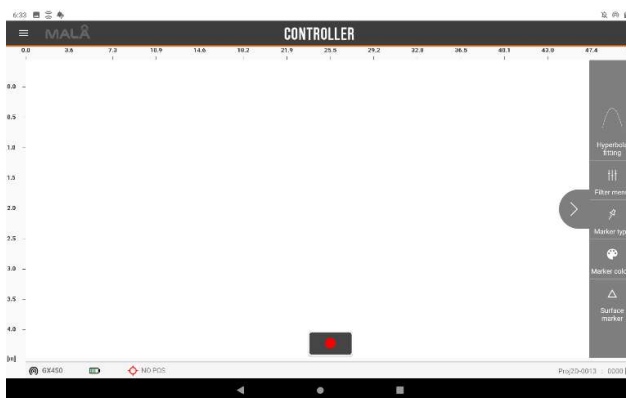
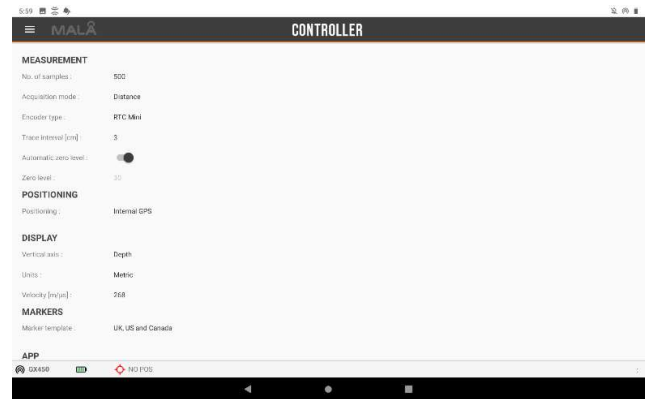
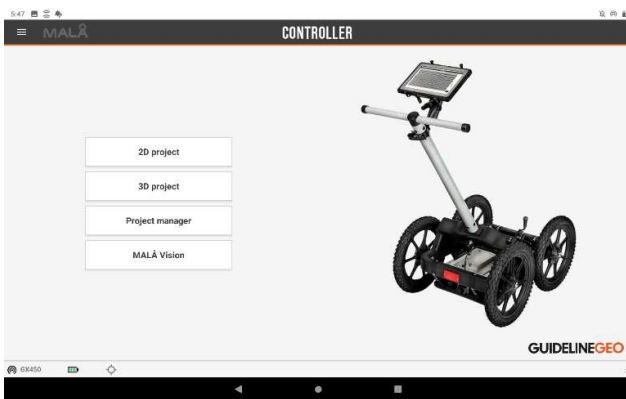


Set up mobile hotspot

- For the mobile hotspot set up, you will need the serial number of the antenna to connect.
- Change the network name to **MALÅxxxxxxx**, where **xxxxxxx** refers to the antenna serial number.
- Change the password for the mobile hotspot to **mala0123**
- Enable the mobile hotspot to allow this specific antenna to connect to your mobile device.

Start measurements

Start the app and select 2D or 3D project or Project Manager to continue. Check the Measurement settings in the Main menu  and start measurements by pressing the red button on the Measurement screen.



Upload to MALÅ Vision

Export of data to MALÅ Vision is seamless and simple. Make sure your mobile device is connected to the Internet. Simply press the MALÅ Vision button on the Start page and choose if you want to Open or Export data. Select the project to be uploaded, please note that only one project at a time can be uploaded.