

This latest release of the SeisTW user interface software for the ABEM Terraloc Pro 2 brings changes to the settings and on-board help to improve the user experience. Please report any issues you may have to: [support@guidelinegeo.com](mailto:support@guidelinegeo.com) A video of this process can be found on our YouTube page: <https://www.youtube.com/watch?v=C3XPH3eZdzI> (note that this will be an earlier software version).

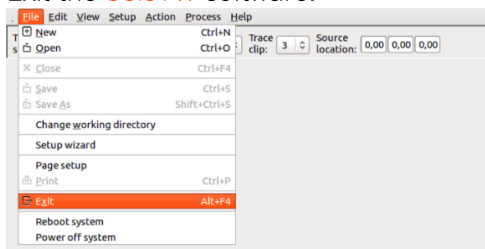
#### YOU WILL NEED

- USB mouse
- USB keyboard
- the office power supply – ensure the instrument is plugged in during the installation
- the three installation files ([lubuntu-rc.xml](#), [tpro2release.sh](#) & [terraloc-linux-1.0.50.tar.gz](#)) on a USB memory stick

**NOTE** The Linux operating system is case sensitive so it is important to follow the instructions exactly.

#### INSTALLATION INSTRUCTIONS

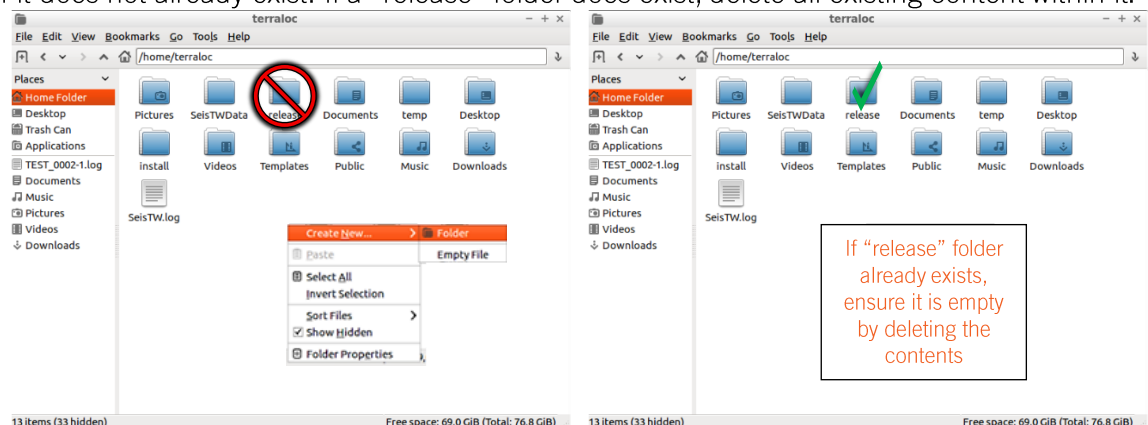
1. Exit the **SeisTW** software.



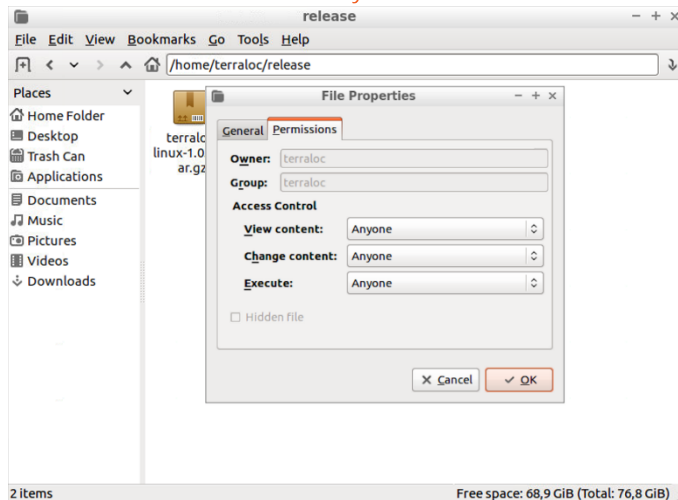
2. Open up the file explorer – the easiest way is to double-click on the “Recycle Bin”.



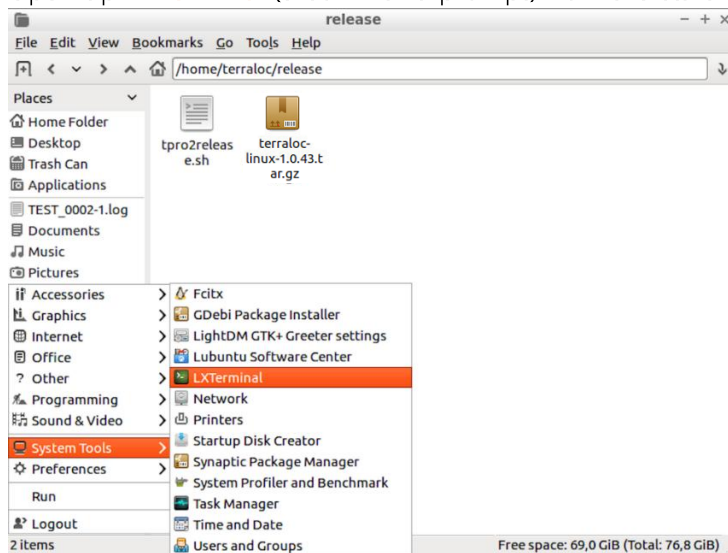
3. Select the “Home Folder” and from the right click menu, create a new folder called “release” if it does not already exist. If a “release” folder does exist, delete all existing content within it.



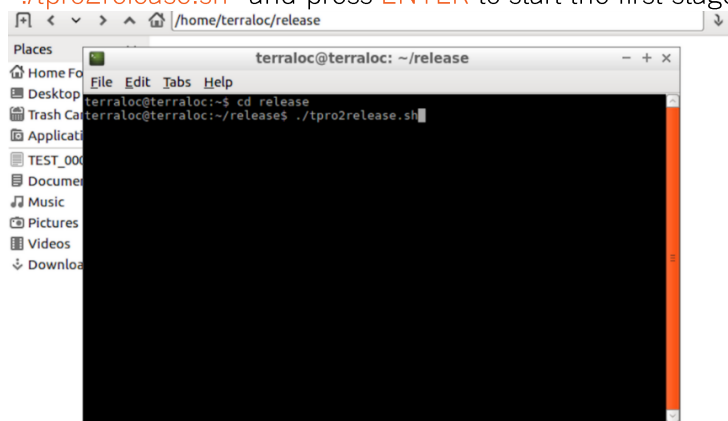
4. Copy the files “[lubuntu-rc.xml](#)”, “[tpro2release.sh](#)” & “[terraloc-linux-1.0.50.tar.gz](#)” from the installation files on your USB stick into this folder. Now, [select all three files](#), and then [right mouse click](#) on them, select “[Properties](#)” from the menu; on the “[Permissions](#)” tab, change the “[Access Control](#)” to “[Anyone](#)” in all three of the categories.



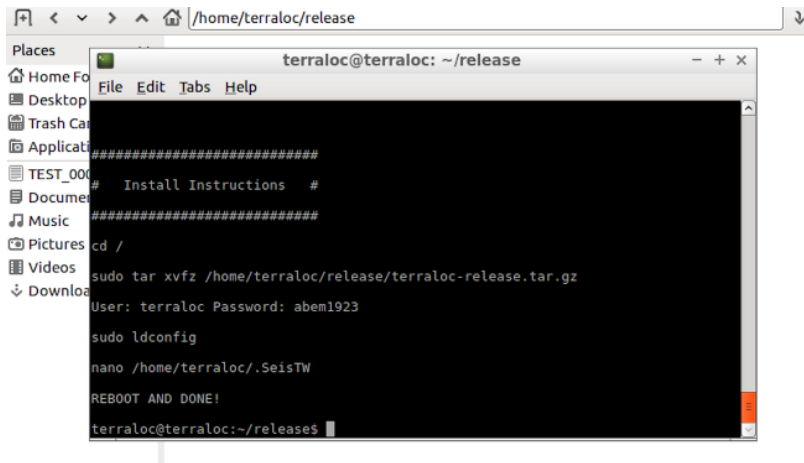
5. Open up [LXTerminal](#) (a command prompt) from the start menu (use a mouse or [CTRL+ESC](#)).



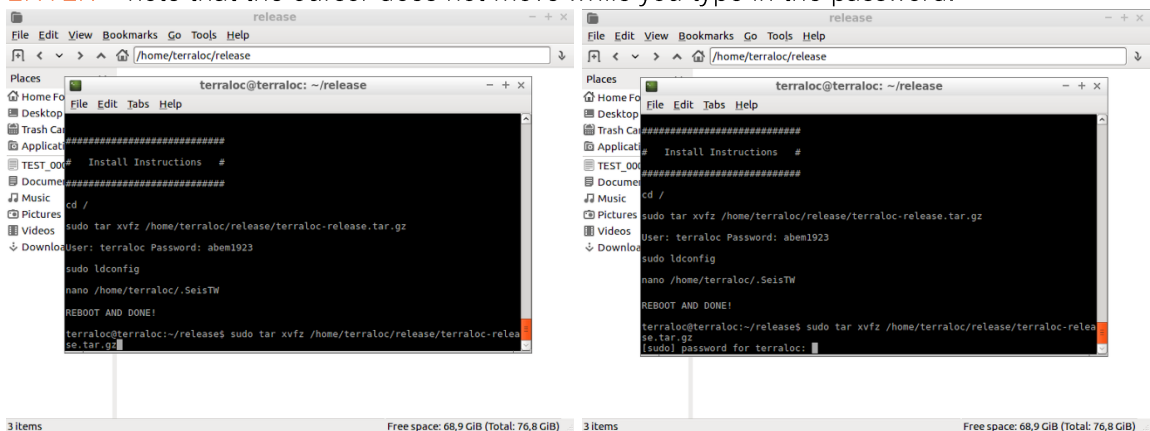
6. In the LXTerminal window (see below), type “[cd release](#)” and press [ENTER](#), this will direct LXTerminal to the “release” folder you just created. On the new line type the command “[./tpro2release.sh](#)” and press [ENTER](#) to start the first stage of installation.



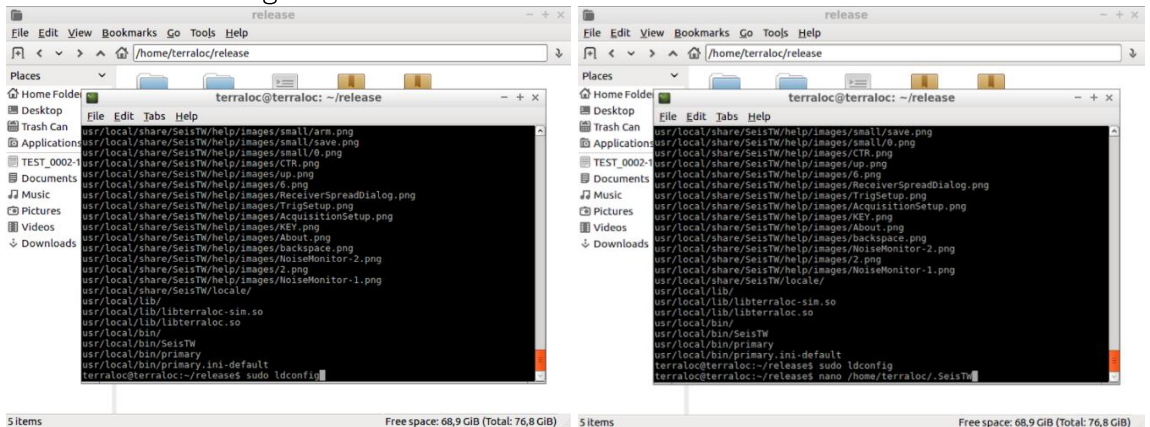
7. After running the `tpo2release` command, further instructions will be shown on screen. These should be completed one line at a time, pressing **ENTER** after typing each command starting with “`cd /`”.



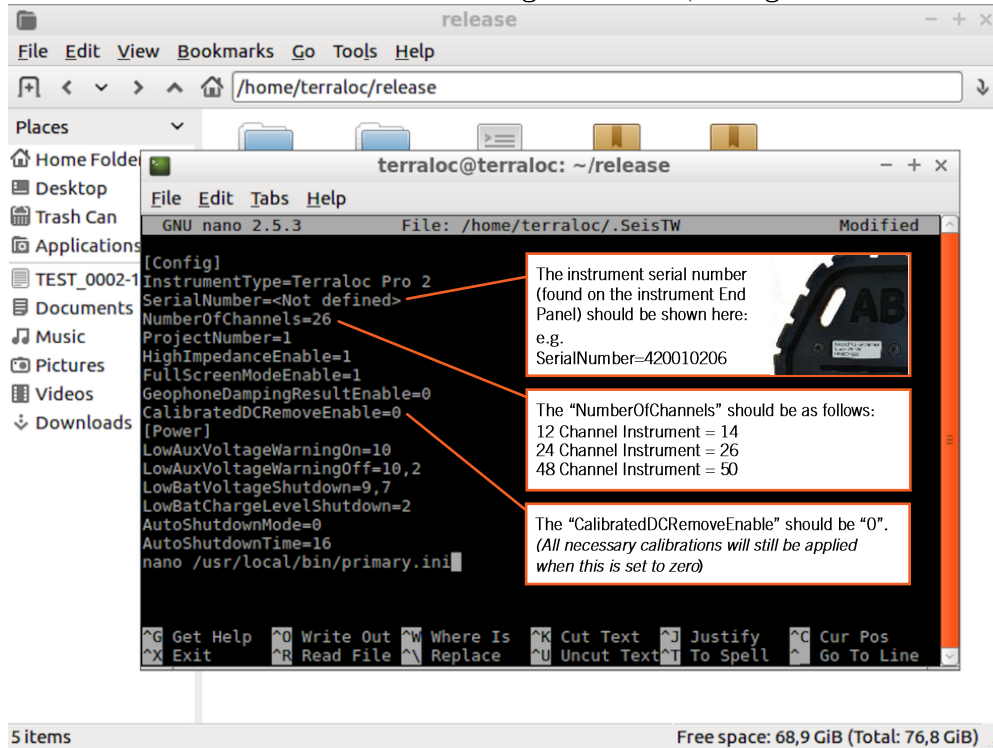
8. Follow the first part of the instructions and type “`sudo tar xvfz /home/terraloc/release/terraloc-release.tar.gz`” followed by **ENTER**, and then type in the password “`abem1923`” followed by **ENTER** – note that the cursor does not move while you type in the password.



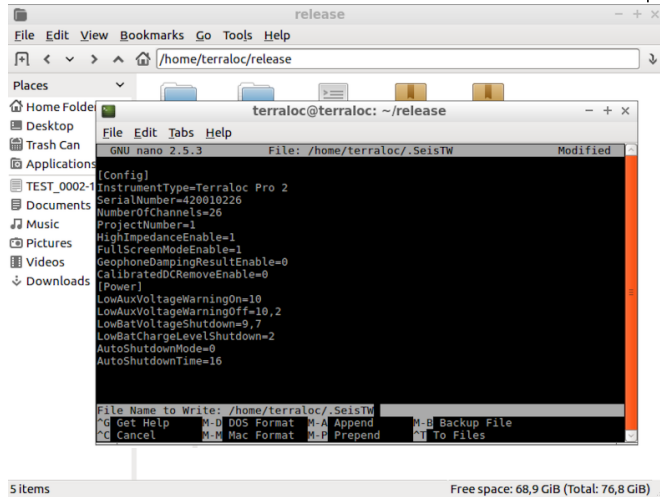
9. Complete the next step in the instructions by typing “`sudo ldconfig`” followed by **ENTER**, then complete the final step by typing “`nano /home/terraloc/.SeisTW`” followed by **ENTER**, to view the instrument settings file.



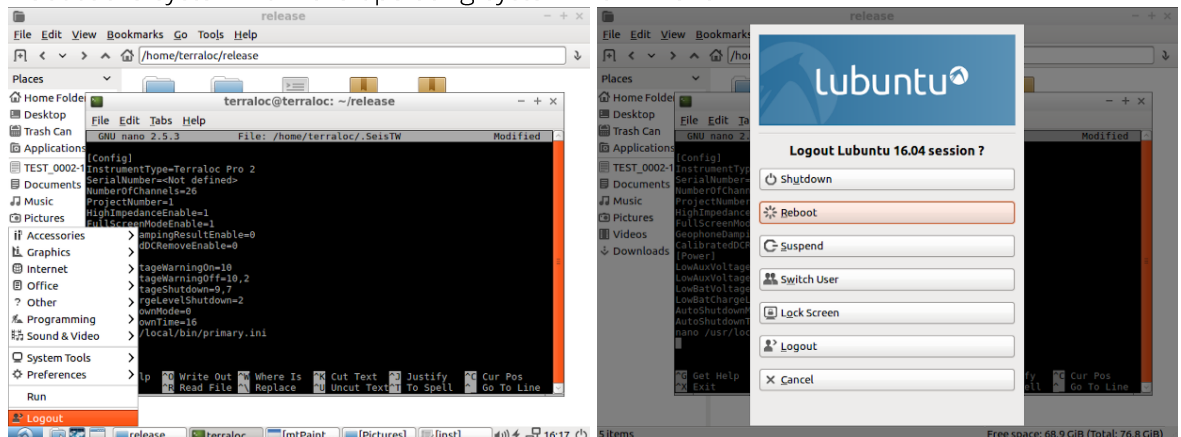
10. If the three items shown below are missing or incorrect, change them here.



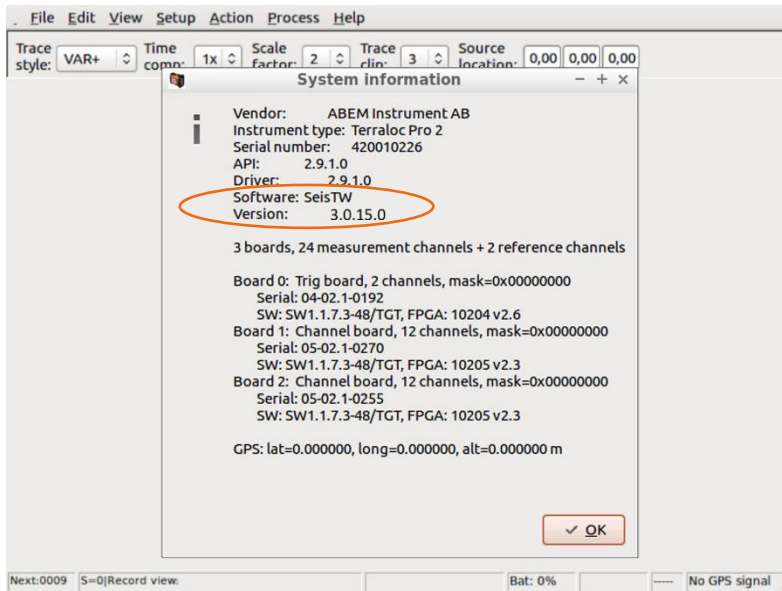
11. If the entries are correct, go to **STEP 15**; if any items need editing, use the arrow keys to move through the text and enter the correct values. **DO NOT CHANGE ANYTHING ELSE**. Save the edited file with **CTRL+O** at the same time and then press **ENTER** to overwrite the old file.



12. Reboot the system from the operating system main menu.



13. After the instrument has restarted, double check that the installation has worked by looking at the software version in the “[Help > System Information](#)” menu. It should read **3.0.15.0**



## RELEASE NOTES FOR v.3.0.15

- Correction of bug with implementation of on-instrument DC removal

**GUIDELINEGEO | ABEM | MALÅ**

*GUIDELINE GEO has been in the geophysics business since 1923 and is the global leader in near-surface geotechnology. Our advanced technology ensures practical solutions to everyday, societal, and global problems. We deliver total solutions in the technological fields of ground penetrating radar, seismic, geoelectrical and electromagnetic measurement. The Guideline Geo AB share (GGEO) is listed on Nasdaq First North Growth Market. We are a Swedish company with international offices and regional partners serving clients in over 100 countries.*

**VISIT US AT [GUIDELINEGEO.COM](http://GUIDELINEGEO.COM)**