



**MIRA Compact**  
**User Guide**

## Our Thanks...

Thank you for choosing Guideline Geo and MALÅ as your Ground Penetrating Radar solution provider. The very core of our corporate philosophy is to provide our users with the very best products, support and services. Our development team is committed to providing you with the most technologically advanced and easy-to-use GPR products with the capability to meet your needs for efficiency and productivity now, and into the future. Whether this is your first MALÅ product, or addition to the MALÅ collection, we believe that small investment of your time to familiarize yourself with the product by reading this manual will be rewarded with a significant increase in productivity and satisfaction.

At Guideline Geo, we welcome comments concerning the use and experience with our products, as well as the contents and usefulness of this manual.

Guideline Geo team

Under the copyright laws, this manual may not be copied, in whole or in part, without the written consent of Guideline Geo. Your rights to the software are governed by the accompanying software license agreement. The MALÅ logo is a trademark of Guideline Geo registered in Sweden and other countries.

The product described in this document is subject to continuous developments and improvements. All particulars of the product and its use contained in this document are given by Guideline Geo in good faith. However, all warranties implied or expressed, including but not limited to implied warranties or merchantability, or fitness for purpose, are excluded. This document is intended only to assist the reader in the use of the product and every effort has been made to ensure that the information in this manual is accurate. Guideline Geo shall not be liable for any loss or damage arising from the use of any information in this document, or any error or omission in such information, or any incorrect use of the product.

Guideline Geo, the MALÅ logo, are trademarks of Guideline Geo, registered in Sweden and other countries. Other company and product names mentioned herein are trademarks of their respective companies. Mention of third-party products is for informational purposes only and constitutes neither an endorsement nor a recommendation. Guideline Geo assumes no responsibility with regards to the performance or use of these third-party products.

Guideline Geo AB

[www.guidelinegeo.com](http://www.guidelinegeo.com)

# Table of Contents

Preface .....	5
Safety and Compliance User Notices .....	6
About MIRA Compact .....	8
Unpack. Inspect. Register .....	9
Overview MIRA Compact.....	10
System set-up .....	11
System components .....	12
Antenna box.....	12
Carrier frame .....	16
Data acquisition software .....	21
Post-processing software .....	21
Positioning .....	22
Maintenance .....	23
Cleaning.....	23
Pivot wheel.....	23
Accessories .....	24

# Preface

## About this Manual

This manual is written for the end user of the product and explains how to set up and configure the product, as well as providing detailed instruction on its use.

## Additional Resources

Training: [www.guidelinegeo.com/training-gpr-resistivity-seismics-tem/](http://www.guidelinegeo.com/training-gpr-resistivity-seismics-tem/)  
Downloads: [www.guidelinegeo.com/support-service-advice-training/resource-center/](http://www.guidelinegeo.com/support-service-advice-training/resource-center/)  
Applications: [www.guidelinegeo.com/application-areas/](http://www.guidelinegeo.com/application-areas/)

## Feedback and Support

Feedback regarding the contents of this manual or the product may be sent using any of the contact details found at [www.guidelinegeo.com](http://www.guidelinegeo.com)

For technical support please contact [support@guidelinegeo.com](mailto:support@guidelinegeo.com)

# Safety and Compliance User Notices

This GPR-device is certified according to FCC, subpart 15, IC RSS-220 and ETSI EN 302 066-1&2.

You are cautioned that changes or modifications not expressly approved by the party responsible for compliance could void the user's authority to operate the equipment.

**Note:** This equipment has been tested and found to comply with the limits for a Class B digital device, pursuant to part 15 of the FCC Rules. These limits are designed to provide reasonable protection against harmful interference in a residential installation. This equipment generates, uses and can radiate radio frequency energy and, if not installed and used in accordance with the instructions, may cause harmful interference to radio communications. However, there is no guarantee that interference will not occur in a particular installation. If this equipment does cause harmful interference to radio or television reception, which can be determined by turning the equipment off and on, the user is encouraged to try to correct the interference by one or more of the following measures: —Reorient or relocate the receiving antenna. —Increase the separation between the equipment and receiver. —Connect the equipment into an outlet on a circuit different from that to which the receiver is connected. —Consult the dealer or an experienced radio/TV technician for help.

## According to the regulations stated in ETSI EN 302 066-1 (European Telecommunication Standards Institute):

The control unit should not be left *ON* when leaving the system unattended. It should always be turned *OFF* when not in use.

The antennas should point towards the ground, walls etc. during measurement and not towards the air.

The antennas should be kept in close proximity to the media under investigation.

## Canadian and US regulations state that whenever GPR antennas are in use the following notes apply:

This Ground Penetrating Radar device shall be operated only when in contact with or within 1m of the ground.

Only law enforcement agencies, scientific research institutes, commercial mining companies, construction companies and emergency rescue or firefighting organizations shall use this Ground Penetrating Radar Device.

This device complies with Industry Canada license-exempt RSS standards. Operation is subject to the following two conditions: (1) This device may not cause interference and (2) this device must accept any interference, including interference that may cause undesired operation of the device.

**French translation**

Cet instrument de Géoradar se devra d'être opéré seulement en contact à même le sol ou en deça d'un mètre du sol.

Cet instrument de Géoradar se devra d'être utilisé seulement par les agences chargées de l'application de la loi, les instituts de recherches scientifiques, les compagnies minières à buts lucratifs, les compagnies de construction et les organisations responsables pour le sauvetage et la lutte contre les incendies.

Cet instrument répond aux exigences de la licence avec Industrie Canada- exempt des standards RSS. L'opération est sujette aux deux conditions suivantes: (1) Cet instrument ne peut pas causer une interférence et (2) Cet instrument se doit d'accepter quelque interférence que ce soit, incluant une interférence qui pourrait causer une opération non-souhaitable de l'instrument.

**Radiation Exposure Statement**

To comply with ISED and FCC RF exposure compliance requirements, a separation distance of at least 20 cm should be maintained between the EUT and all persons during normal operation.

**French translation**

Pour se conformer aux exigences de conformité d'exposition ISDE et FCC RF, une distance de séparation d'au moins 20 cm doit être maintenue entre l'EST et toutes les personnes pendant le fonctionnement normal.

## About MIRA Compact

The MIRA Compact, together with the data acquisition software MIRA Controller is a very efficient and easy to use multi-channel system for 3D GPR measurements.

The MIRA Compact system enables measurement combinations between any of the individual receiver and transmitter antennas used in the array and all antennas are using the MALÅ HDR technology (High Dynamic Range).

When careful attention is given to accurate positioning and data collection, the MIRA Compact array produces extremely high-resolution output. As standard you measure with 10 channels with only 6.5 cm separation.





## Unpack. Inspect. Register

Great care should be taken when unpacking the equipment. Be sure to verify the contents shown in the packing list and inspect the equipment and accessories for any loose parts or other damage.

**Note:** The packing list that is included with the shipment should be read carefully and any discrepancy should be reported to our sales department at [www.guidelinegeo.com](http://www.guidelinegeo.com)

**Note:** All packing material should be kept if any damage occurred during shipping

File any claim for shipping damage with the carrier immediately after discovery of the damage and before the equipment is put into use. Any claims for missing equipment or parts should be filed with Guideline Geo within fourteen (14) business days from the receipt of the equipment.

### Repacking and Shipping

The Guideline Geo packing kit is specially designed for shipping MIRA Compact. The packing kit should be used whenever shipping is necessary. If original packing materials are unavailable, pack the instrument in a box that is large enough to allow at least 80 mm of shock absorbing material to be placed all around the instrument. This includes top, bottom and all sides.

**Note:** A special designed wooden freight crate is also available to purchase for MIRA Compact. It is a durable option if the system is often shipped between sites.

**Warning:** Never use shredded fibres, paper, or wood wool, as these materials tend to compress and permit the instrument to move inside packing box.

Please read our shipping instructions before returning instruments to Guideline Geo. These instructions can be found on our website at [www.guidelinegeo.com](http://www.guidelinegeo.com) and click on Support.

### Registering your MIRA Compact

By registering your equipment, you ensure that you will receive important information, such as manual updates, software upgrades and other product information, which all helps to optimize the utilization of the equipment and realize the maximum return on your investment.

To register your equipment, visit [www.guidelinegeo.com](http://www.guidelinegeo.com) and click on Support.

**Note:** The serial number is found on the rear right-hand side of the antenna box.

## Overview MIRA Compact

In short, the MIRA Compact system comprises the following parts:

- **MIRA Compact antenna box.** Special antenna box for deployment of the MIRA Compact system, holding 6 receiver (Rx) and 5 transmitter (Tx) antennas with a central frequency of 500 MHz. The default set-up provides a 10-channel swath; however, it is possible to program any Tx-Rx combination giving up to 30 data channels. The antenna box is powered by four hot-swappable internal batteries.
- **MIRA Compact carrier frame.** The carrier is equipped with three wheels, a handle, a computer holder, a GNSS mount and two integrated encoders on the rear wheels. The encoders are used to trig data collection and keep track of the distances.

To make the system complete and ready for measurement, the following are also needed:

- Field computer (Windows 10 or later with Ethernet port) with the MIRA Controller software installed, to collect, save and view multi-channel data. We strongly recommend the use of a rugged field computer.
- Positioning system e.g. RTK-GNSS or Total station.



To connect the parts, see the *System set-up* section below. Instructions and information for carrying out a multi-channel MIRA measurement can be found in the *MIRA Controller User Guide*.

## System set-up

1. Connect the Ethernet cable between the computer with MIRA Controller installed and the connector marked Ethernet on the connector panel of the antenna box. See section *Antenna box*.
2. Make sure that the encoder cable is connected between the MIRA Compact carrier frame and the Encoder connector on the connector panel of the antenna box. See section *Antenna box*.
3. Mount the GNSS antenna and if using a RS-232 cable for your GNSS, connect this to your computer. See section *Positioning*.
4. If you need to power your computer, connect the same to the Power Out connector (USB-C) on the connector panel. See section *Antenna box*.
5. Power up the MIRA Compact and wait for the light on the On/Off button to change from blinking to solid (this means that the hardware is ready for connecting to MIRA Controller). See section *Antenna box*.
6. Start the MIRA Controller software on your computer. The system will automatically connect, and the software will guide you through all necessary steps. See section *Data acquisition software*.
7. See the *MIRA Controller User guide* for details on how to operate the software.

**Note:** When cables are not connected, the protective caps of the connectors MUST be attached. This prevents dirt and moisture ingress in the connectors.

### Swath width and center of antenna



The MIRA Compact antenna box, with marking of swath width (arrow) and centre point (dashed line). The swath width and the centre point are marked on the carrier frame as well.

# System components

## Antenna box

### Antennas

The MIRA Compact antenna box is available with a centre frequency of 500 MHz. This frequency will cover investigations depths down to approximately 4-5 meters. The maximum measurement depth will vary and depends for example on the soil conductivity locally.

The MIRA Compact antenna box houses 5 transmitters and 6 receivers.

### Connector panel

All connectors are placed at the rear side of the antenna box. Here, from left to right, you find the connection to the encoders, antenna connector to the internal GNSS<sup>1</sup>, Power In for charging, charge indicator, On/Off button, Power Out (USB-C) and Ethernet connection. Also see *System set-up* section.

When powered, the On/Off button diode blinks while the MIRA Compact system is booting; it becomes solid once the system is ready to connect to MIRA Controller.



**Note:** When cables are not connected, the protective caps of the connectors MUST be attached. This prevents dirt and moisture ingress in the connectors.

### Cables

An Ethernet and a USB-C cable are supplied with the system. The Ethernet cable for data transfer has a rugged connector on the antenna side for reliable and robust data collection.

The USB-C cable connects to the Power Out connector and can be used to charge a laptop or other peripheral units, e.g., an RTK GNSS. Any USB-C cable can be used however it is strongly recommended to use the supplied cable since it protects the connector on the antenna box.

Spare cables can be purchased directly from Guideline Geo or through your local MALÅ partner.

<sup>1</sup> The *Ext. Antenna* connector is intended for future features.

## Built in GNSS

The MIRA Compact has a built in GNSS module that utilises the Pulses Per Second (PPS) output for synchronisation of the recorded traces to the external RTK GNSS measurement input. This aids in an improved positioning and alignment of each recorded trace due to potential latency between the external GNSS and the MIRA Compact.

A GNSS antenna is located inside the antenna box. If the system is covered or placed in a surrounding where satellite view is blocked the GNSS reception can be too poor for the system to get time lock. Move the system to a position with better satellite reception to get time lock before beginning your measurements.

## Batteries

The MIRA Compact is powered by four 14.4V Li-Ion batteries. The batteries are located in the battery compartment behind the two black lids. Make sure the lids are securely closed to prevent water and dust from entering.

The batteries are hot-swappable, meaning that batteries can be exchanged while the system is running as long as at least one charged battery is kept in the system. The system can be used with a single battery if needed, however we recommend always using four batteries when possible, for optimal survey time and performance.

**Note:** Power off the antenna array when not in use to prevent battery drainage.

All four batteries can be charged in the system using the provided charger. Connect the charger to the Power In connector on the antenna box connector panel. MIRA Compact does not have to be powered on for the batteries to charge. The red charge indicator LED on the system will be lit while the batteries are charging and shuts off when charging is complete.



The green indicator on the charger is lit whenever the charger is powered and does not indicate charge state.

When the charger is connected to the system the USB-C connector will also provide power, enabling you to e.g., charge a laptop at the same time.

**Note:** The charge indicator LED on the system only indicates charging of the internal batteries and not of devices being charged via the USB-C connector. Always check charge and power status on your peripheral devices separately.

The batteries can also be charged in the external smart battery charger, where two batteries can be charged at the same time.



Powering the MIRA Compact batteries with the external charger is done as follows.

Powering the charger:

1. Connect all cables to the charger and plug it into the mains socket.
2. Once the battery charger completes its self-test, the LED will turn off. The battery charger is now ready for use.
3. If the red control lamp stays on without a battery in the charger, the charger is defective.

Charging batteries:

1. Connect the battery charger as described above.
2. Place a discharged Smart Battery into the battery charger.
3. The battery charger makes a battery recognition and initialisation.
4. The battery will be charged, leave the battery until the green LED lights.
5. Remove the battery for use.

The LED light on the external charger indicates the follow cycles.

One time Red/Orange/Green	Self-test: Charger is ready for use
Red/Green blinking	The battery is not recognised as a Smart Battery. Either a conventional battery is inserted or an extremely discharged Smart Battery. If it is a Smart Battery, it will be reactivated within 15 minutes and recharged. If this is not the case, the LED will light red – see below.
Orange blinking	The battery is currently being calibrated.
Orange light	The inserted battery is the correct type and is currently being charged.
Green light	The battery is charged and can be removed for use.
Red blinking	The battery is too hot or too cold to be charged without damage. If the battery is too cold, it will be charged as soon as it has warmed up sufficiently. If the battery is too hot it should be removed to cool down.
Red light	Either - the battery is damaged and must be replaced, or it is a conventional battery which cannot be recharged.

## Skid plate

The skid plate is attached directly to the antenna box. It is intended to protect the bottom of the antenna box and is sealed to the antenna box to prevent water from collecting under the antenna box, potentially affecting the data. The skid plate is expected to be worn out and changed when needed. How often it needs to be replaced depends on how the system is used, including factors such as ground conditions. We recommend inspecting the skid plate before and after each use. New skid plates can be purchased directly from Guideline Geo or through your local MALÅ partner.

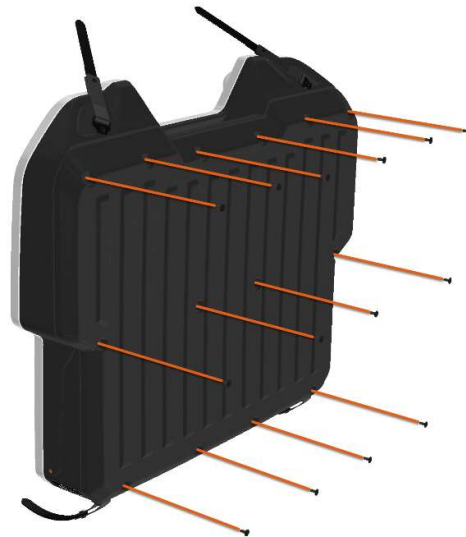


**Note:** The skid plate is expected to be worn out and changed when needed.

To replace the MIRA Compact skid plate follow these steps:

- Remove the screws with a TX25 screwdriver. There are 14 screws in total.
- Remove the skid plate.
- Mount the new skid plate and fasten it using the new screws supplied.

It is possible to replace the skid plate while it is mounted on the carrier frame.



*The antenna box with skid plate and screws.*

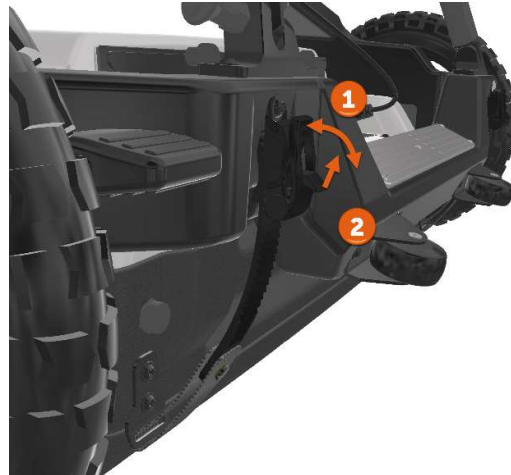
The skid plate is made of High-Density Polyethylene (HDPE) and should be recycled according to local recycling guidelines. There is a stamp mark with a recycling symbol on the inside of the skid plate stating that it's made of recyclable material, code 2 (HDPE).



## Straps

To adjust the ground clearance, pull on the height adjusting lever (1) on each strap to the desired height. To lower the antenna, pull distinct on the release levers (2). If there's difficulties lowering the antenna, lift the antenna with one hand while pulling the release lever.

If needed due to wear and tear the straps can easily be replaced. New straps can be purchased directly from Guideline Geo or through your local MALÅ partner.



## Carrier frame

### Antenna assembly

The antenna is mounted in the carrier frame using four straps and two stabilizer arms. The floating antenna solution makes it possible to operate MIRA Compact over uneven surfaces. The ground clearance is easily adjusted using the straps.

To detach the antenna from the carrier frame, start by detaching the four straps, then tilting the carrier frame backwards you can access and unscrew the two shoulder screws with a 4 mm hex key.





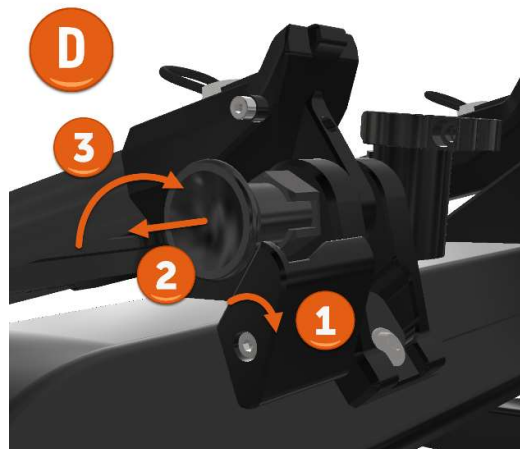
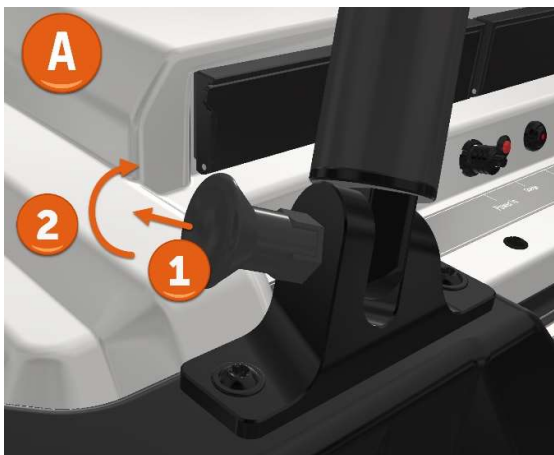
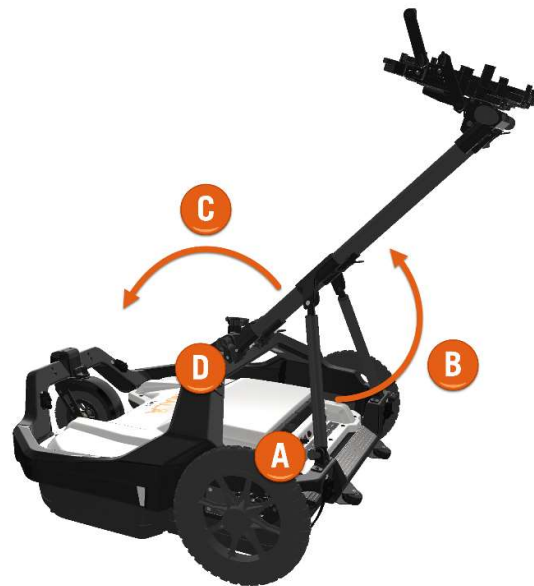
## Handle

Before removing the handle, ensure that the cables are disconnected from the antenna.

To remove handle from frame:

- A. Begin by unlocking the lower plungers.
- B. Raise the support arms.
- C. Fold handle forward.
- D. Unlock the upper plungers.

When reattaching the handle, follow the reverse order of the steps. Be cautious not to pinch any cables while folding the handle. Align the white markings on cables to the white cable holder on the handle to make sure there is enough slack on the cables to fold the handle.



## Laptop holder

Adjust the angle of the laptop holder by pulling the lanyard and setting it to a preferred angle. See separate guide for first time adjustment of the laptop holder to fit your field laptop.



**Note:** Use the arm on the computer holder to support the computer screen, for secure measurement on rougher terrain.

## Brakes

The MIRA Compact is equipped with foot operated brakes for the two rear wheels. Push the paddle down to engage the brake and lift to release it. Make sure the brakes are released before moving the unit.



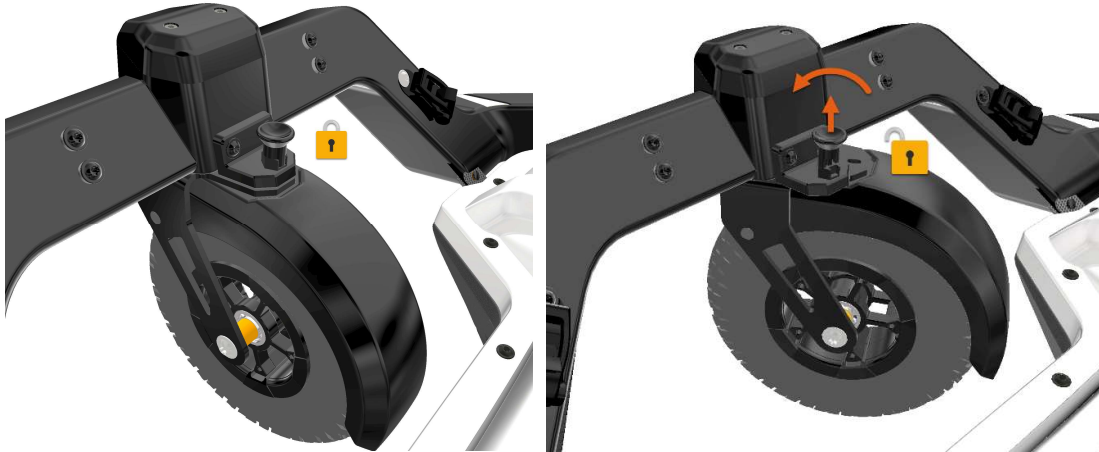
## Encoders

The system has two encoders, one on each rear wheel. A single cable and connector (on the left side of the upper frame) is used to transfer the signals from both encoders to the antenna box. Should there be any issues with an encoder it is possible to configure the system to use either right or left encoder instead of both. This is done in the MIRA Controller software.

MIRA Controller includes default encoder values (*Compact Frame*). For accurate triggering we recommend calibrating the wheels on a regular basis. See *MALÅ MIRA Controller* user guide for more information.

## Pivot wheel

For easy manoeuvring the carrier frame has a pivot wheel in the front. This can be locked to a straight position using the lock pin. To release, pull the pin upward and rotate a quarter of a turn. To lock, make sure the wheel is straight, then rotate the pin a quarter of a turn and it will slide into position to lock the wheel.



## Transport wheels

It is easy to move the MIRA Compact system through narrow passages using the transport wheels. The MIRA Compact frame is provided with two wheels for easy transportation. You simply fold the handle and raise the system on the rear side and then move the system as a suitcase.

**Note:** Make sure the cables are mounted with some slack before folding the handle. The white mark on the cables should be matched with the white cable fastener on the handle.



## GNSS and prism pole mount

The carrier frame is equipped with a quick-release GNSS and prism pole connection (1) designed for 25 mm diameter poles. If you have a thicker pole, an adapter (2) with 5/8 UNC threading is included.



MIRA Compact comes with a 150 mm long GNSS pole as standard. If you require a longer pole, we recommend the MALÅ GNSS support kit, which includes an 800 mm pole. This kit is available for purchase directly from Guideline Geo or your local MALÅ partner.

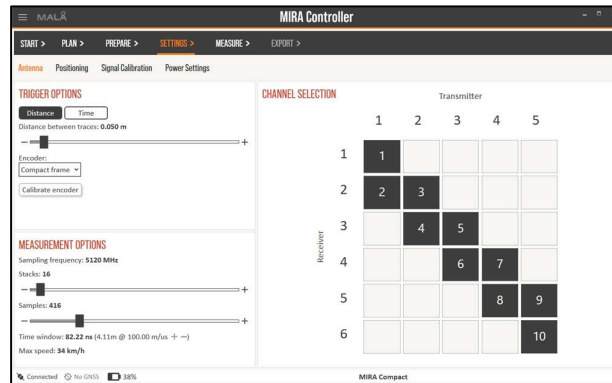
**Note:** The MALÅ GNSS support is designed for use with 25 mm diameter poles only.



## Data acquisition software

The MIRA Controller data acquisition software simplifies the process of collecting, viewing, and saving data from the MIRA Compact.

This user-friendly software offers a straightforward application. For more details, refer to the *MIRA Controller User Guide*.



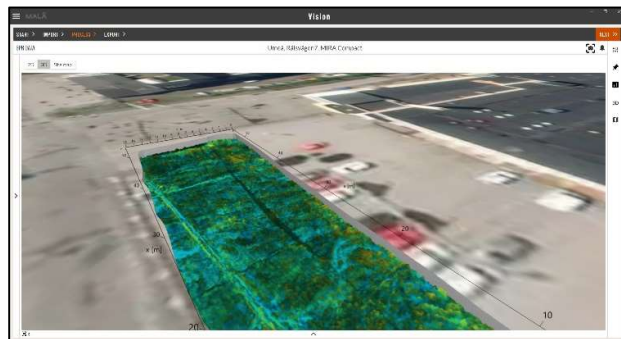
The computer used for measurements should be placed in a convenient position for the operator to monitor the measurement progress whilst carrying out the investigation.

**Note:** It is strongly recommended to use a laptop with a native Ethernet port. The use of Ethernet adapters may cause unexpected issues during data collection.

The MIRA Controller software aids collection of data with a satisfactory overlap between swaths and will provide information on coverage of your investigation area.

## Post-processing software

Data from MIRA Compact and MIRA Controller measurements can efficiently be post-processed in the MALÅ Vision Desktop software. For more information see the *MALÅ Vision Desktop User Guide*.



# Positioning

For an accurate 3D radar picture, precise positioning of the antenna array is crucial throughout the survey. Achieving centimetre accuracy across the entire investigation site is essential. The MIRA Compact offers flexibility in positioning, supporting both RTK GNSS and Total station solutions.

The GNSS-system used can function as a rover-base setup or without a base station, provided a compatible rover unit and correction subscription service are available.

**Note:** When using a base-rover setup, ensure correct positioning of the base.

Configure the positioning system to export data in NMEA 0183 GGA format for the GNSS option, allowing the MIRA Controller data acquisition software to accurately record and assign it to the GPR swaths.

For hand-pushed measurements, it's recommended to use a GNSS update rate of 5 Hz.

The GNSS antenna or the Total Station prism can be attached to the MIRA Compact Carrier solution, supplemented with the MALÅ GNSS support, see section *GNSS and Prism pole mount*.

Choosing the positioning method depends on the investigation site conditions:

- In environments with trees, high buildings, or other obstacles, a Total Station is preferred.
- However, on open ground with lower vegetation and/or fewer overhead obstacles, an RTK GNSS solution is often a faster, and easier method of positioning.
- The Total Station needs line of sight and possibly an extra operator for the Total Station if tracking fails.
- If the investigation area is large, the Total Station may need to be moved and new Total Station positions defined, which can be more time consuming. However, every type of investigation area can be covered by a Total Station which is not the case with a GNSS.

**Note:** Temporary loss of tracking will not cause the data to be useless, provided the start and end points of each swath are well defined.

**Note:** Measurements can be carried out without any positioning system but is not generally recommended unless absolutely necessary. The measurement lines should be straight and with an even spacing so coordinate files for post-processing software can be created afterwards.



# Maintenance

## Cleaning

To keep your MIRA Compact in top condition, follow these simple cleaning steps:

- Gently wipe the MIRA Compact with a wet towel containing mild soap.
- If needed, you can use a water hose for rinsing. Ensure battery compartments are securely closed.
- Dry off any excess water with a towel and allow it to air-dry thoroughly before using it again.

**Warning:** Do NOT use a pressure washer to clean the MIRA Compact.

**Warning:** Do not use any strong cleaning chemicals when cleaning the MIRA Compact.

## Pivot wheel

If you encounter any issues with the pivot wheel, follow these steps:

1. Detaching the pivot wheel:
  - Press the push button (1) while lowering the pivot wheel (2) to detach it.
2. Cleaning and maintenance:
  - Ensure the axle and bronze bushing in the frame are clean, free from dirt or debris.
  - For additional access, remove the top cover by taking out the two screws on top.
  - If needed, lubricate the axle with WD40 (or a similar lubricant).



## Accessories

To enhance efficiency during fieldwork, we offer a range of accessories:

- Rugged field computer
- GNSS antennas
- Tripod for base GNSS antenna
- Different length GNSS poles
- Extra batteries and chargers
- Extra skid plates
- Spare cables (Ethernet, USB-C, Encoder)

Feel free to explore these accessories to tailor your equipment to specific needs. If you have any questions or need assistance, don't hesitate to reach out to Guideline Geo or your local MALA partner.