



**MALÅ Vision Desktop
User Guide**



Our Thanks...

Thank you for choosing Guideline Geo and MALÅ as your Ground Penetrating Radar solution provider. The very core of our corporate philosophy is to provide our users with the very best products, support, and services. Our development team is committed to providing you with the most technologically advanced and easy-to-use GPR products with the capability to meet your needs for efficiency and productivity now, and into the future.

Whether this is your first MALÅ product, or addition to the MALÅ collection, we believe that small investment of your time to familiarize yourself with the product by reading this manual will be rewarded with a significant increase in productivity and satisfaction.

At Guideline Geo, we welcome comments concerning the use and experience with our products, as well as the contents and usefulness of this manual.

Guideline Geo team



Under the copyright laws, this manual may not be copied, in whole or in part, without the written consent of Guideline Geo. Your rights to the software are governed by the accompanying software license agreement. The MALÅ logo is a trademark of Guideline Geo registered in Sweden and other countries.

The product described in this document is subject to continuous developments and improvements. All particulars of the product and its use contained in this document are given by Guideline Geo in good faith. However, all warranties implied or expressed, including but not limited to implied warranties or merchantability, or fitness for purpose, are excluded. This document is intended only to assist the reader in the use of the product and every effort has been made to ensure that the information in this manual is accurate. Guideline Geo shall not be liable for any loss or damage arising from the use of any information in this document, or any error or omission in such information, or any incorrect use of the product.

Guideline Geo, the MALÅ logo, are trademarks of Guideline Geo, registered in Sweden and other countries. Other company and product names mentioned herein are trademarks of their respective companies. Mention of third-party products is for informational purposes only and constitutes neither an endorsement nor a recommendation. Guideline Geo assumes no responsibility with regard to the performance or use of these products.

Guideline Geo AB
www.guidelinegeo.com

Table of Content

About MALÅ Vision Desktop.....	5
Installation and Login.....	5
Subscription	6
Getting started.....	7
Data format and back-up	9
Process Tab	10
Filters	12
Migration settings.....	13
Interpretation	14
Analysis	17
3D settings.....	18
Site map	21
Edit geometry.....	22
Edit geometry – data with GNSS or 3D Grid Projects and OBM	22
Edit geometry – Non-GNSS data.....	24
Other features	25
Annotations	25
Screenshots.....	26
Report and Export	27
Create report.....	27
Export data	27
Txt- and csv-export.....	28
Dxf-export	29
Software settings	30

About MALÅ Vision Desktop

MALÅ Vision Desktop is the desktop version of MALÅ Vision Web, which enables offline data processing. MALÅ Vision Web and MALÅ Vision Desktop are two separate software solutions, and no data syncing is currently possible between the two. MALÅ Vision Desktop is optimized for handling larger datasets including 3D and array data.

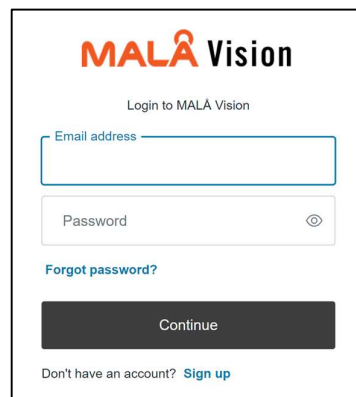
Note: To use MALÅ Vision Desktop you need to have a MALÅ Vision Premium subscription.

Installation and Login

To install the software, download the installation file from www.guidelinegeo.com and double-click on the msi-file. Always make sure to use the latest version.

When downloading the software, note that depending on the browser used, different warnings may occur. For instance, for Microsoft Edge you need to press the *Keep* link, to be able to save and see the file in *My Downloads* folder.

The performance of the software will depend on the specifications of your computer. Most processing needs will be met with any modern Windows computer equipped with at least 8 GB of RAM and an i5 processor or higher.



The image shows a login window for MALÅ Vision. At the top is the MALÅ Vision logo. Below it is the text "Login to MALÅ Vision". There are two input fields: "Email address" and "Password". The "Password" field has a toggle icon (an eye) to the right. Below the "Email address" field is a link that says "Forgot password?". At the bottom is a dark grey button labeled "Continue". Below the button is a link that says "Don't have an account? Sign up".

When installation is ready you can open the software and login with the same email address and password you use for your MALÅ Vision Web account. If you do not have any MALÅ Vision account with a Premium subscription, please visit malavision.guidelinegeo.com or press *Sign Up*.



Subscription

To be able to use MALÅ Vision Desktop you need a Premium subscription of MALÅ Vision Web. Go to the main menu option  **Subscription** when logged in on MALÅ Vision Web.

Fill in all the personal details marked with an asterisk (required field).

For a monthly payment by card, fill in the card details on the last row and press *Process*.

Now you can download MALÅ Vision Desktop and log in with your user credentials.

Note: It is the responsibility of the customer to cancel the subscription and to remove the card details if you don't wish to continue your subscription.

If you have purchased a prepaid code, fill in the code number, press *Verify* and then *Process* (please note that the required fields in the rest of the form need to be filled in as well). In this case the card details can be left empty.

If card details are added when a pre-paid code subscription comes to an end, the monthly billing will be resumed (by card). Please remove the card details if you want to avoid this.

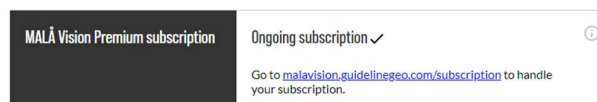
Note: You cannot activate more than one pre-paid code at a time. If you have several pre-paid codes, activate the next code when the first one has expired.

On the subscription page you also cancel or update your subscription and find the receipt history.


Note: Make sure you have internet access when starting MALÅ Vision Desktop for the first time. You will be prompted to log in to your MALÅ Vision account to verify that you have an active premium subscription. After this initial log in, your computer will remain verified for a period of 30 days, after which you will need to log in to your account again.

Note: MALÅ Vision Desktop can be installed on two computers at the same time. If needed, you can remove access, and add new ones. This option is found in the *Subscription* settings menu.

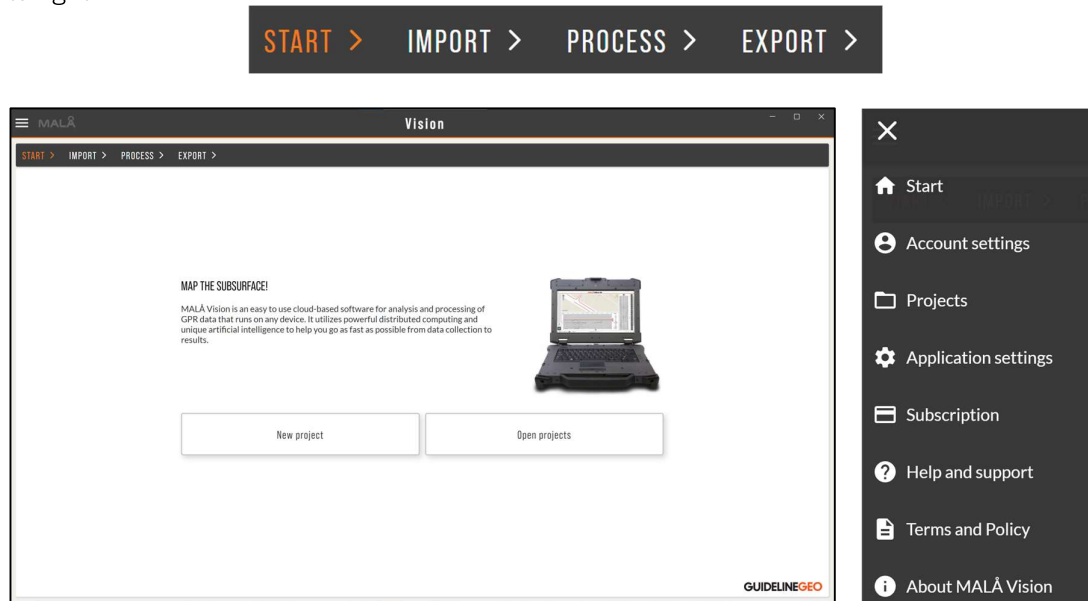
To access your subscription settings, use the link found in MALÅ Vision Desktop's Subscription settings.



Getting started

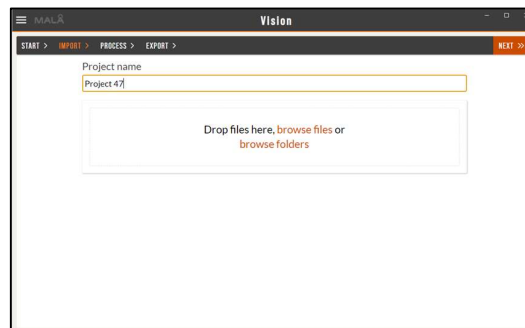
When you start MALÅ Vision Desktop you can create a new project or open an existing project. Account settings, application settings, subscription details etc. are found in the main menu, which is accessed by clicking the hamburger menu  at the top left corner. For more information see section *Software settings*.

For efficient workflow, go through the different tabs, *Start*, *Import*, *Process* and *Export*, from left to right.



To create a new project, press *New project*.

Start by naming your project. Drag and drop your files or zipped or unzipped data folders onto the drop zone or use the browse function to upload files.



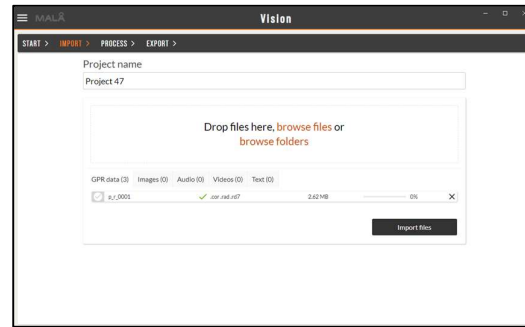
Note: If you drag and drop a complete project folder, MALÅ Vision will import all recognizable data and meta data formats automatically.

Note: The maximum size for a zipped folder is 2 GB. If the project is larger, unzip the folder first.



Press the *Import files* button to start the process. When import is started, the software switches to the Process tab, the main view of the software. For more information see the section *Process Tab*.



Note: You can also upload images and videos connected to your GPR project.

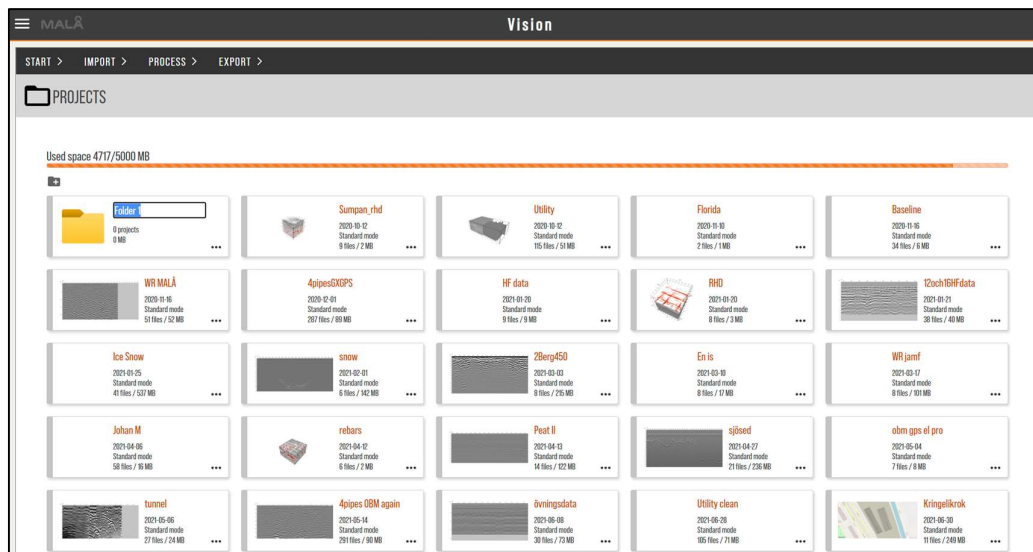



MALÅ Vision Desktop imports MIRA, MIRA HDR and MIRA Compact data (acquired with MIRA Controller) as well as MALÅ 2D files, Object Mapper and 3D Grid projects (acquired with MALÅ Controller App or some of MALÅ's Monitors / Controllers). When uploading an Object Mapper Project, you will get the option to decide if X or Y should increase to the north.

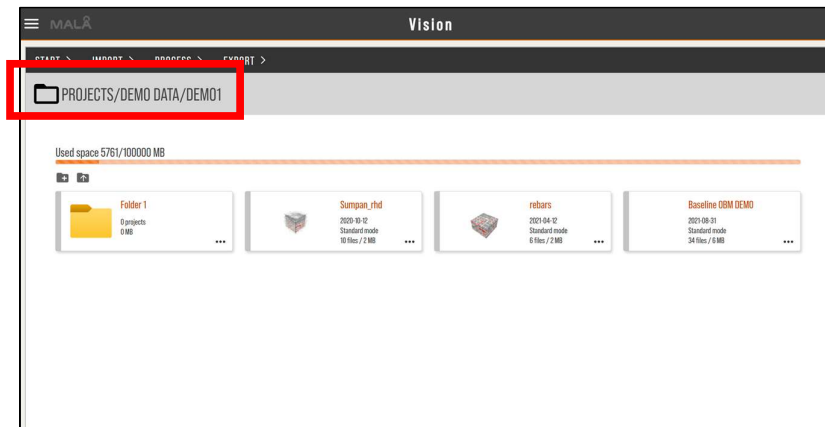
MALÅ Vision Desktop also imports GPR data from ImpulseRadar and GSSI as well as the SGY-format.

To open an existing project, choose *Open Projects* from the start menu. All available projects are listed with name and size. The amount of available disk space on your account is also displayed at the top of the window.

To organize your projects, you can create folders by clicking  and add projects to these folders by drag-and-drop. To delete and rename projects and folders click the  button.



In order to move projects and folders further up in the map structure, drag-and-drop the project or folder to the desired level (marked with red below). You can also click on these folder names (in the red marked area below) to move to the desired folder level or use .

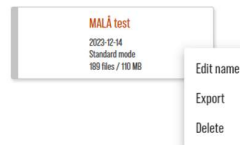


Data format and back-up

MALÅ Vision Desktop uses its own internal data format. To back up your data and interpretations use the Export option in the Project view. You reach this by Projects in the Main menu or by Open Projects at the start screen. Press **...** and choose *Export*. A zip file is created of the project content.




If you want to delete projects, use the Delete option in the Project view. Press **...** and choose *Delete*.



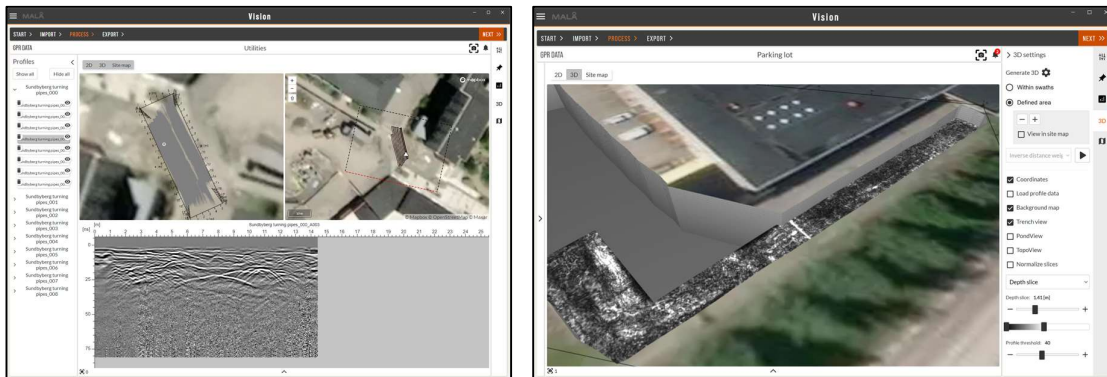
Process Tab

When the project is uploaded, the GPR data file is displayed in the main view, the Process Tab. If the *Interpolate on project start* box is ticked (found in the main menu *Application settings*, see section *Software Settings*), data is also automatically interpolated to a 3D volume. Imported array data is also automatically processed with suitable filters. These can freely be changed, see section *Filters* or the automatic function can be turned off, see section *Software settings*.


The list of all imported GPR profiles can be found in the left-hand side pane. Press the arrow  on the left-hand side to view and navigate between imported profiles. You can easily switch between profiles using PgUp and PgDn on your keyboard.


In the Process Tab, you can choose to look at the data in 2D, 3D or in a Site Map view. All three windows can be activated at the same time or just one or two of the views.

The main menus for processing, interpretation and tools related to the different views are found on the right-hand side. Separate toolboxes are available for Filter settings, Interpretation, Analysis, 3D settings and Site Map. These will be explained in the following sections.



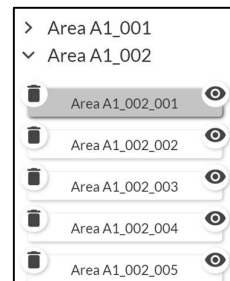
Note: The dashed line in the Site Map view shows the corresponding area in the 3D view.

Note: The toolboxes and Profile list are dynamic and can be minimized or maximized by using the arrows  on each side of the screen.

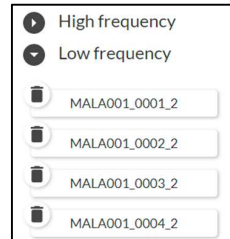
Note: Notifications from the software  give information on upload status, interpolations, error messages etc. These can be deleted, one by one or all at once.




If you have MIRA, MIRA HDR or MIRA Compact data, the swaths are displayed separately and can be opened to toggle between the different channels.





If you have Easy Locator WideRange data, the low and high frequency profiles are displayed separately on the left-hand side. To switch between the High and Low frequency just click on that row.



Filters

In order to add filters and process your data, choose the Filters toolbox  and press *Add filter* to add the desired filters and processing steps.

Filters can easily be turned off and on with  or deleted with .

Some filters have additional controls; for example, the velocity for the FK-migration is adjusted by using a slide-bar. The correct velocity is determined by adjusting the slide-bar until the legs of the hyperbola are minimized and only a point response remains in the data. See example in section Migration settings.

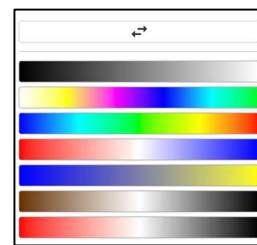
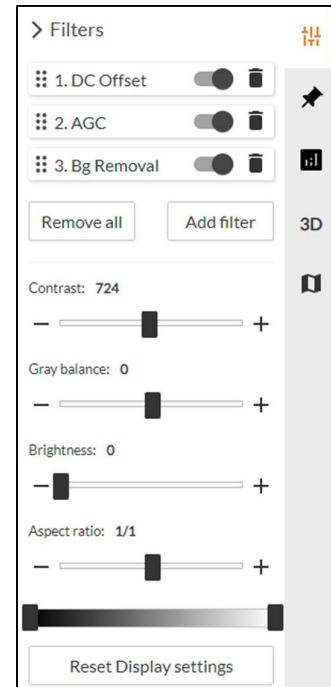
In the Filters toolbox display settings (contrast, grey balance, brightness) for the 2D and 3D views are made. A contrast slide-bar is also found on the 3D View.


Use the aspect ratio and zoom (mouse wheel/stretch with two fingers on mouse pad/screen) to zoom in and out in the 2D data.

If you keep the left mouse-button down and move, the radargram with the present zoom and aspect ratio level will move.

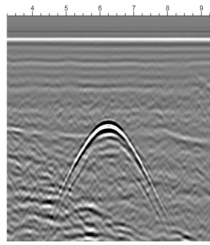
If you click on the color scale bar you can choose between seven different color schemes. The direction of these can be changed by pressing the arrows. Click somewhere on the screen to close the pop-up and now you can also use the nodes to change the strength of the colors.

To reset the display settings, press *Reset Display settings*.

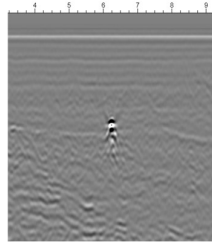


Note: The preferred color scheme can be set as the default color map in the *Application Settings*, found in the main menu .

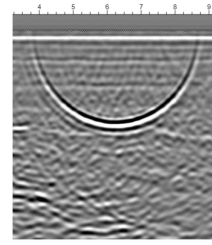
Migration settings



Too slow migration velocity



Correct migration velocity



Too fast migration velocity

Interpretation

To add interpretations, use the Interpretation toolbox

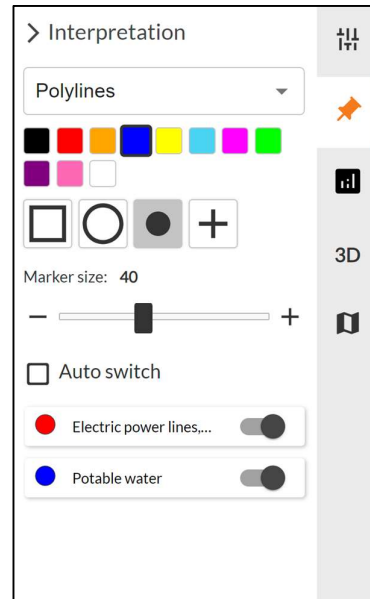


Select the type of interpretation you want to make: Markers, Polylines or Polygons, in the drop-down menu. Then choose the color, type and size of your marker.

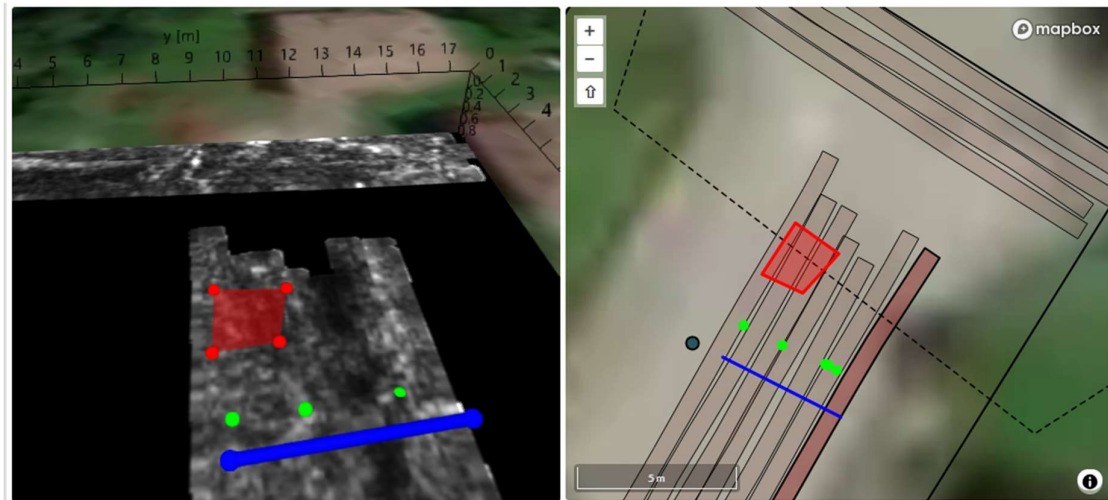
Note: Polygons can only be added in the 3D view.

Left-click in the displayed profile (in the 2D view) to add a marker or a polyline. To move or delete a marker, right-click on the marker in the profile and select the appropriate action. See picture below.

Left-click in the displayed depth slice (in the 3D View) to add a marker, polyline or polygon. To delete a marker, right-click on the marker in the depth slice and select the appropriate action. See picture below.



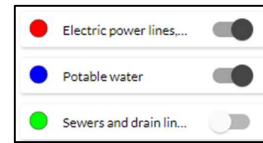
Note: Interpretation as markers, and polylines in the 3D volume can be set at different depths.



The different interpretation types: markers, polylines and polygons.

When right-clicking on a marker (in the 2D View) you can also set the depth of the same. The velocity of the radargram will change accordingly. See picture below.

To hide markers, polylines or polygons these can be turned on or off in the Interpretation tab.



Use the Auto switch option to automatically jump to the next 2D radargram in your list (left-hand pane) when setting markers.

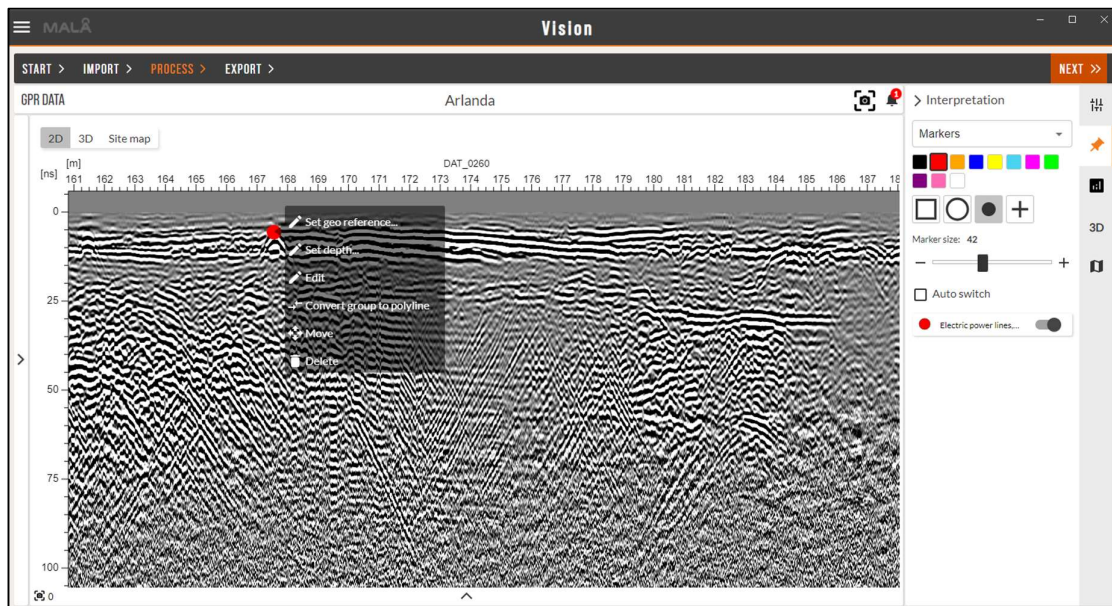
Note: The colors of the markers are defined in the marker template, found in *Applications settings*, in the main menu.

Note: Set markers can be converted to polylines and set polylines can be converted to single markers. Right-click on the marker or polyline and choose the option *Convert group to polyline* or *Convert polyline to markers*.

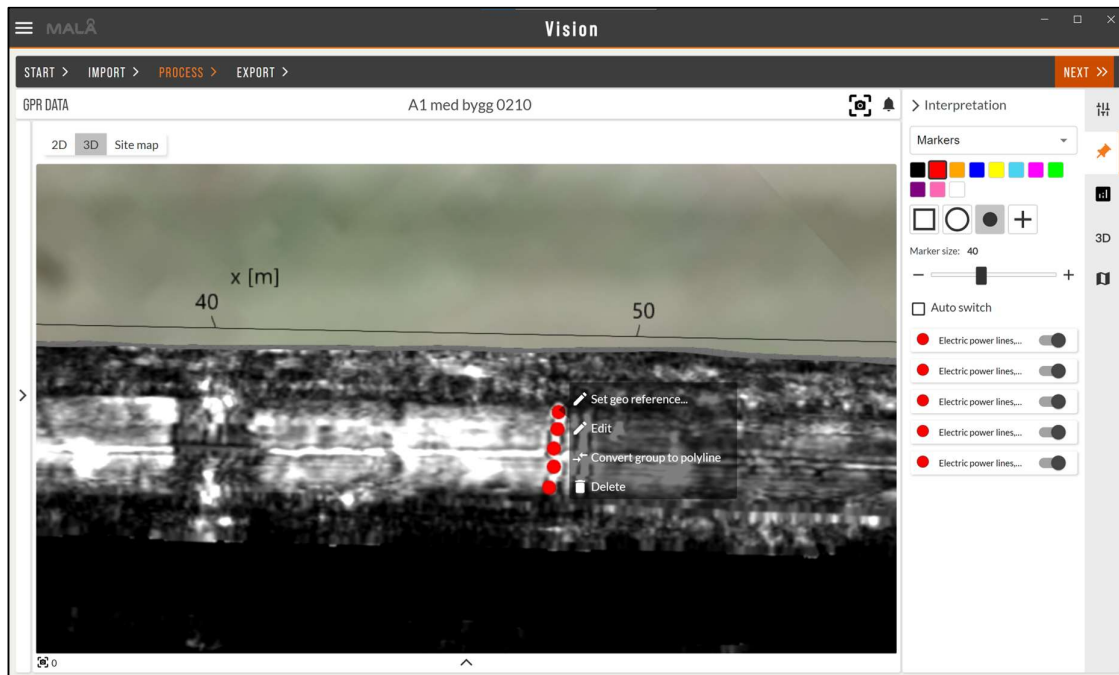
Note: Make sure to choose the correct option Marker, Polyline, Polygon, in the drop-down menu when working with the interpretation.

When right-clicking on a marker in the 2D view you get a menu with different actions (Set geo reference, Set depth (for markers), Edit, Convert, Move, Delete). When choosing Edit, this provides you with an option to edit markers, polylines and polygons in form of color, shape and size through the Edit marker toolbox.

When right-clicking on a marker in the 3D view you can set geo reference, convert markers to polylines, edit and delete. With the edit option you can change size, color and shape of the marker.



Interpretation in 2D data with markers. Right-click view the interpretation menu.

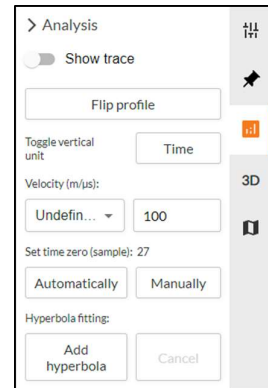


Interpretation in 3D data with markers.

Analysis

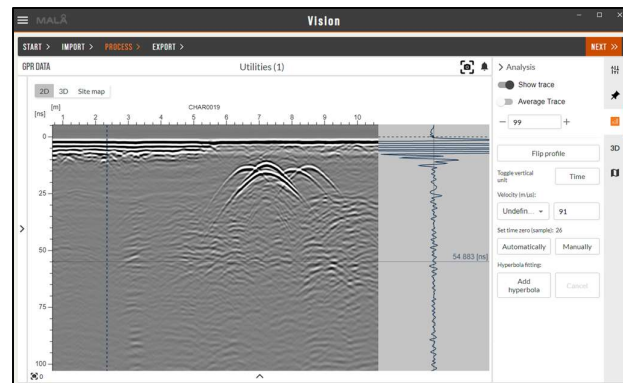
In the Analysis toolbox the following features are found:

- Turn on and off trace view
- Flip profiles
- Toggle between depth and time for the vertical unit
- Set velocity (manually or using pre-defined values)
- Adjust the time zero
- Hyperbola fitting to check the velocity of your radar data.

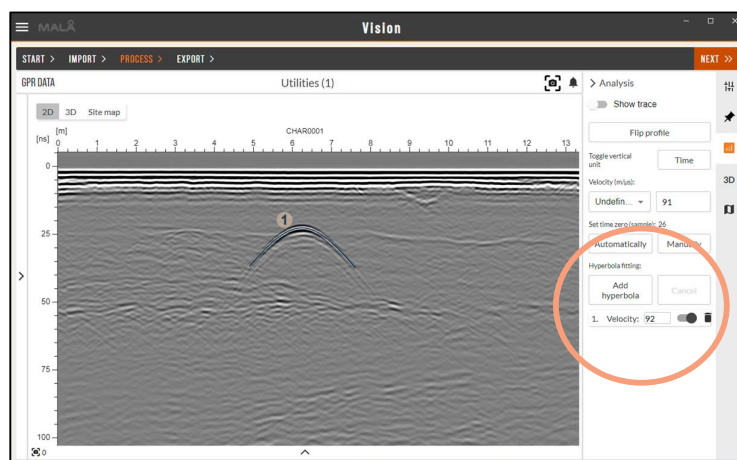


When trace view is on, you display a single trace or an average for the whole profile.

By using + and - or entering a number, the trace number to be displayed is set.



Hyperbolas can be used and added to displayed data for an easy verification of the velocity. Press *Add hyperbola* and place the hyperbola in the radargram in the 2D view with a left-click. Change the velocity in the Analysis toolbox to change the shape of the hyperbola. Right-clicking on the top of the hyperbola gives you the option to delete or move the same. To move, choose *Move*, and then use your mouse (hold down left button) and move the hyperbola.





3D settings

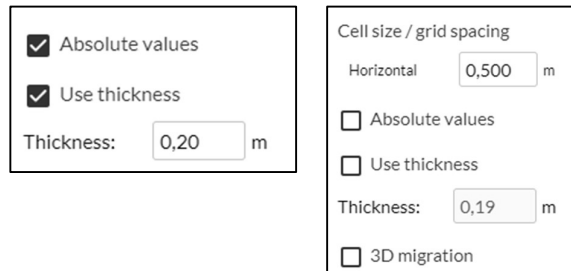
In the 3D tab you can view your data as single 2D files in a 3D volume, interpolate your data, and change the threshold of the 2D profiles.

By right-clicking on a profile in the 3D view, you can hide it. By left-clicking on a profile in the 3D view, you will open it in the 2D View (make sure this view is open). Keep the right mouse button down and move will move the 3D volume at the present zoom level.

Note: When viewing data as a 2D file in a 3D volume, the processing, display settings and color scheme follows from the 2D View.

To create a 3D volume of your MIRA HDR and MIRA Compact data, as well as 2D lines, press  to start the interpolation. MALÅ Vison Desktop decides the best interpolation scheme to use, depending on your data type. You can continue working as the interpolation is carried out.

Use the  to change the interpolation settings. Depending on data type the interpolation scheme differs as well as the setting possibilities. If the y-scale is set to time or depth in the Analysis toolbox, the thickness is defined in ns or m / feet.



☒ Absolute values
☒ Use thickness
 Thickness: m

Cell size / grid spacing
 Horizontal m
☐ Absolute values
☐ Use thickness
 Thickness: m
☐ 3D migration

The different options for the interpolation settings are:

- Grid spacing. This can be kept around the trace distance for high resolution. If you want the interpolation to speed up, you can increase the spacing, but this will decrease the resolution.
- Absolute values. If ticked, calculations are made on the magnitude of the radar wave and ignoring the polarization. In other words, all negative values become positive. Often it is suitable to have this option ON when using thickness on the depth slices.
- Thickness. This is the thickness of the depth slice. If thickness is used, all depth slices get the same thickness, from top to bottom.
- 3D migration. Migration is made in all directions and not only along the profile as in 2D migration.

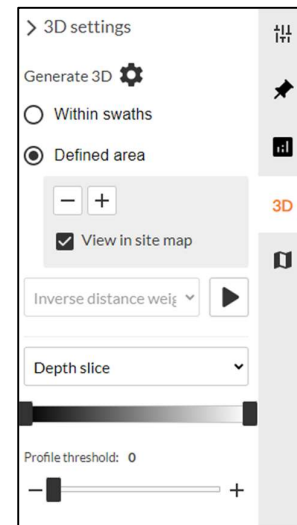
Note: It can be good to try some different settings on a small defined area, for fast results and then use the best settings for the complete project.

For MIRA, MIRA HDR and MIRA Compact data you can interpolate within swaths or a defined area. For 2D data you can interpolate in a defined area.

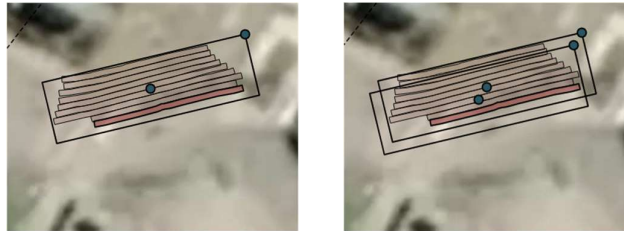
The option Within swaths will interpolate the data within the measured swaths but not in-between the same. With the option Defined area, MALÅ Vison Desktop by default selects all data on the Site Map view and interpolate within and between swaths in that area.

This area can be changed:

- Move by click and hold on the center point,
- Rotate by click and hold on the corner.
- Click and hold on any of the sides to change size.

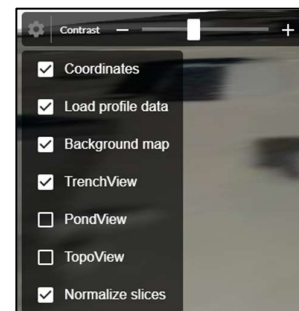


Areas for interpolation can also be added. When pressing + a new area of the same dimension and rotation is added to the center of the view. Press – to remove the previously set area. Press Ctrl+D to duplicate the last placed area. When using Ctrl-D the area is placed overlapping the previously set area.

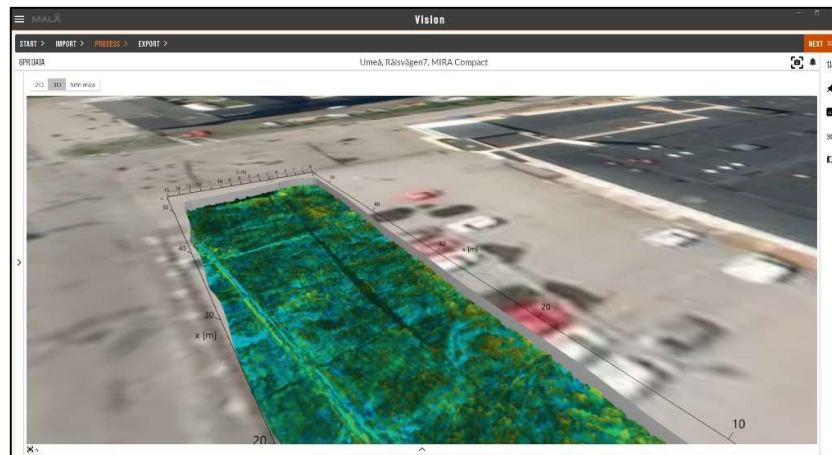


When the interpolation is ready, data can be viewed as a time slice (in the 3D View) and with or without Trench view. There is also a Pond view color option (with or without topography) to enhance the 3D effect of your objects even more.

These options are found in the Site map settings 




Note: The Pond view options are disabled if interpolation is made without using thickness in the interpolation settings pop-up .

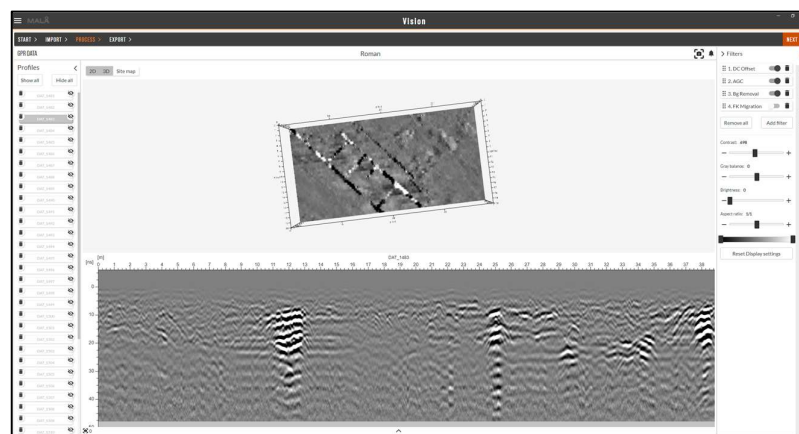


PondView colors enabled

The colors of the 3D View can be changed by clicking on the color scale bar. This will open a selection of seven different color maps. See Section *Filters*.

Profile threshold makes weak reflections in the 2D profiles below the given threshold transparent. This option is used for the 3D view, when 2D profiles are shown.

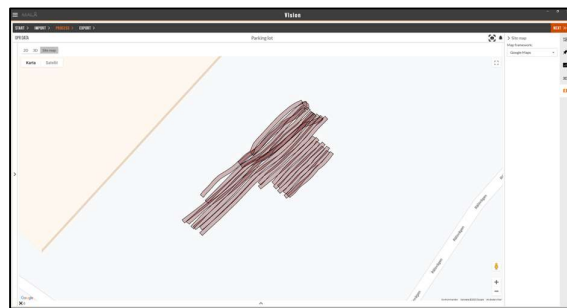
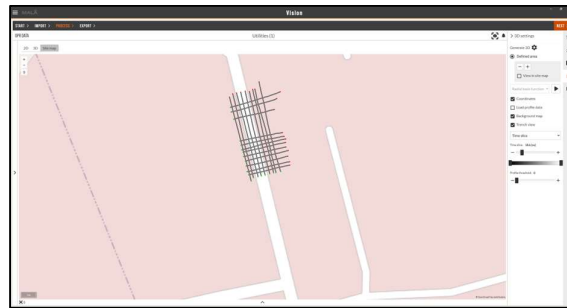
Note: The left-hand pane  can be used to view or hide all 2D profiles included in the 3D volume. Individual profiles can be hidden from the 3D view by clicking on the eye icon next to the specific profile, or with a right-click on the profile in the 3D view.



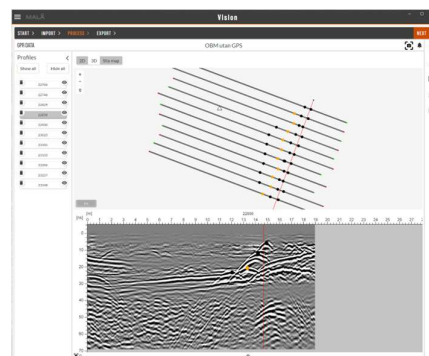
The profile list is visible on the left-hand side

Site map

If your imported data contains positioning information (as cor-files of different types or obm-files created with GNSS) the Site map will display all GPR profiles onto a map or satellite image for cor-files and a layout for obm-files. The Site map will also display all interpretations, including polylines if these are enabled in the Interpretation toolbox.



If you have 2D profiles without any positioning (cor- or obm-files created without GNSS) these will be displayed as defined in the obm-file or as evenly distributed parallel profiles, where the location can be edited. See section *Edit Geometry* below.



The color on the ends of 2D GPR profiles indicates the direction the data was collected. Green dot indicates the start and red the end of the profile.

When you hover above the profiles in the site map the correct profile is highlighted in the left-hand profile list. When right-clicking on one of the nodes (red or green dot) on a profile in the site map, this will provide you with an option to show the profile in the 2D view. Make sure the 2D view is open.

Note: When making changes to markers in the 2D view, these are automatically updated in the Site Map.

Edit geometry

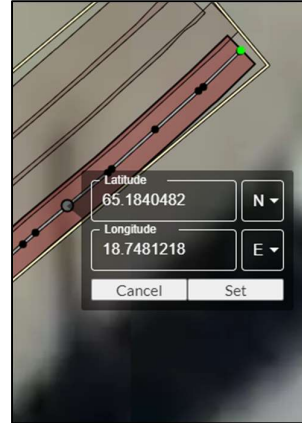
The geometry can be edited for all types of collected files. Depending on GNSS or non-GNSS data the edit differs. See the following sections below.

Note: To enable Edit of data acquired with GNSS, choose OpenLayers as map resource in the Site Map toolbox.

Data in Site Map can also be georeferenced. Right-click on the node that will be used for georeferencing and enter the corrected Lat and Long positions. Press *Set*.

If data is collected using GNSS positioning the current position is displayed, otherwise the Latitude and Longitude values are 0.

When georeferencing is done for two points, the data set will move and rotate to the new location. The first point set gives the rotation of the project and the second point the exact location. If setting a georeference point again, it will be point 2 for rotation and point 3 for the exact location.



Note: *Reset to original* is only applied for edited relative positions of nodes, not for georeferenced points.

Note: If positioning information is acquired with Total Station, the data set needs to be georeferenced before export of interpretation (as markers and polylines) to WGS84 or some other projection.

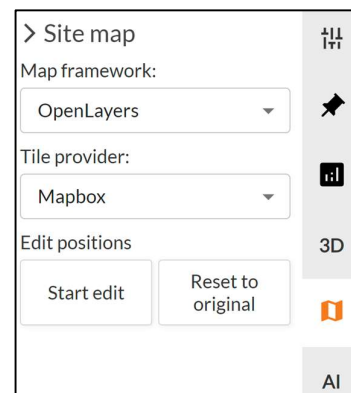
Edit geometry – data with GNSS or 3D Grid Projects and OBM

If you have collected data with positioning (cor-files available) the following adjustments can be made, when pressing *Start edit*:

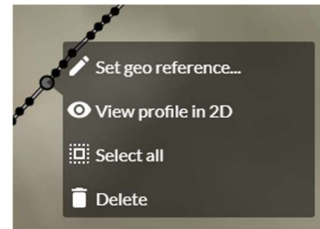
- Change position of single nodes.
- Change position of several or all nodes.
- Change position of several lines.

Use the following commands to mark and move:

- Mouse-click to mark a single node.
- Control+mouse-click to mark several nodes.
- Shift+mouse-click+hold to draw a square around nodes or profiles be marked.
- When the nodes are marked: Hold down left mouse button and move.



To mark all nodes, right-click and press *Select All*. When the nodes are marked: Hold down left mouse button and move.



For data sets with 2D data you will see all available nodes when choosing *Start edit*. For MIRA data you click on the swath to edit, to display the nodes.



Display of GNSS nodes for 2D and MIRA array data

When you are satisfied with your changes, press *Save positions* for saving or *Cancel* to return.



Example of marked and moved nodes

You can also georeference the data, by right-clicking on a GNSS-node and selecting the option *Set geo reference*. For more information see section *Edit Geometry*.

Edit geometry – Non-GNSS data

If you have collected data without positioning as single 2D files, MALÅ Vision Desktop will automatically place them in parallel, and you can easily adjust the following:

- Place profiles in parallel or in a grid
- Change profile spacing and rotation
- Flip profiles

When right-clicking on a profile point you can view the profile in 2D (make sure the 2D view is open), flip that single profile or georeference the project.

Toolbox

Edit positions

Start edit
Reset to original

Place profiles

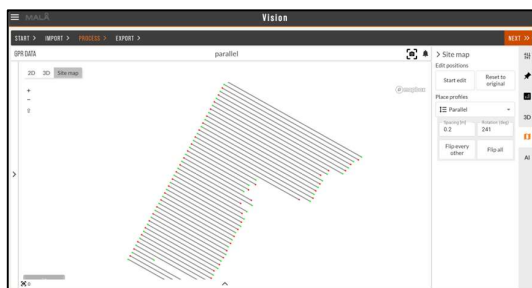
Parallel

Profile spacing [m]
0.5
Rotation (deg)
0

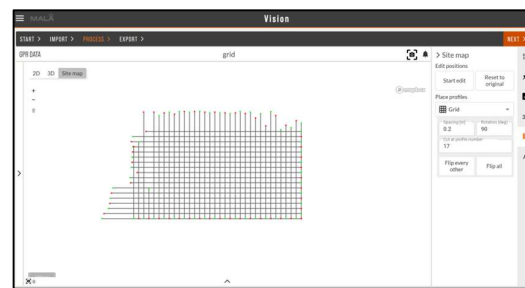
Flip every other
Flip all

☐ Markers

Note: When pressing *Start Edit* the nodes can be marked and moved as for GNSS and OBM data. See section *Edit Geometry – Data with GNSS or OBM projects*.



Data rotated and flipped



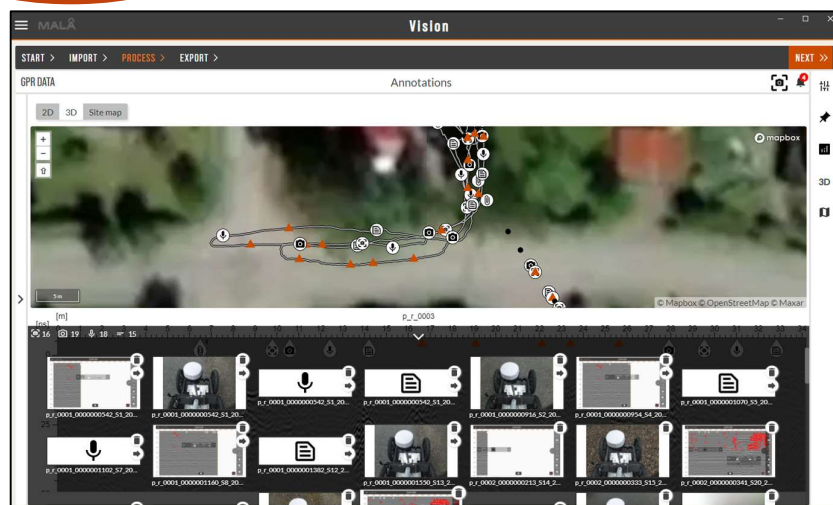
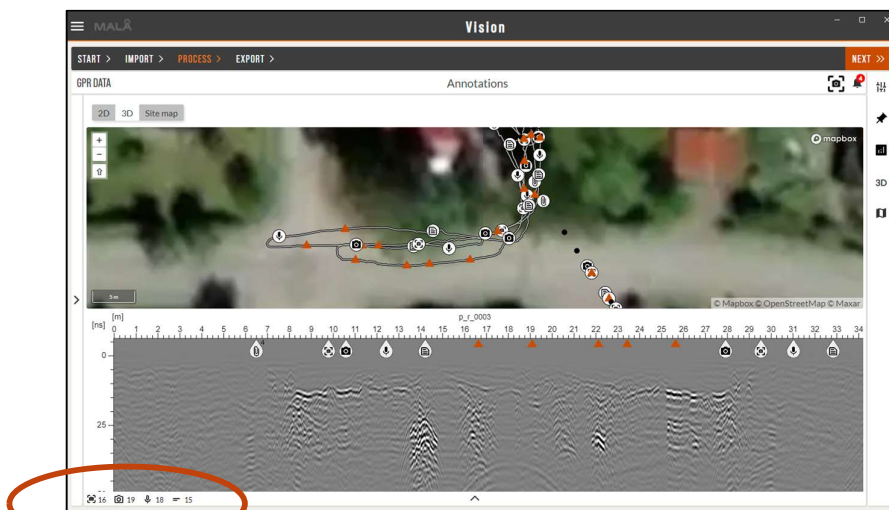
Data files sorted as a grid

Other features


Annotations

All annotations added during a survey using the MALÅ Controller App (audio, photo, snapshot, text etc.) will be imported together with your project and will be available by clicking the annotations bar below the radargram view (see images below). The project plan created with MIRA Controller is also imported as a text annotation.

You can open and view/edit your annotation with a click, or you can press the arrow on top to the annotation thumbnail to move to the location of that specific annotation (in the 2D view or Site map if these are open).

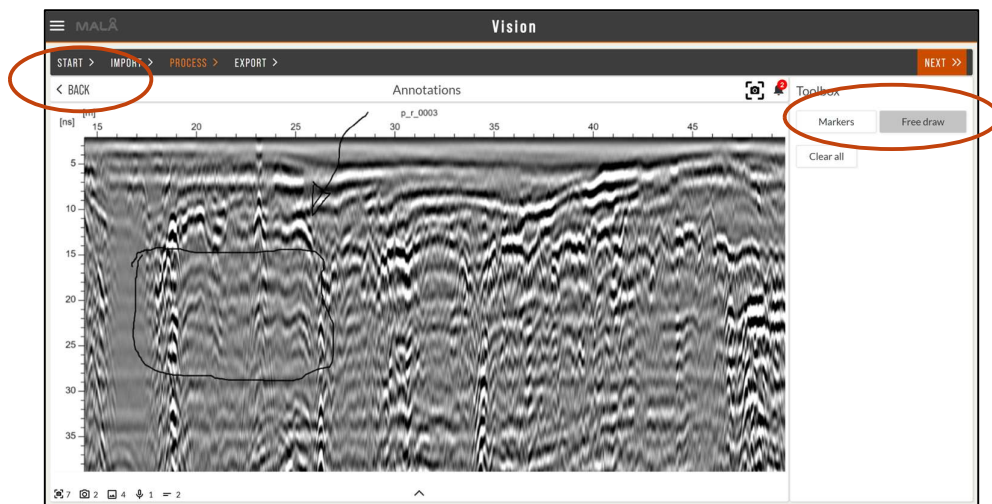


Screenshots

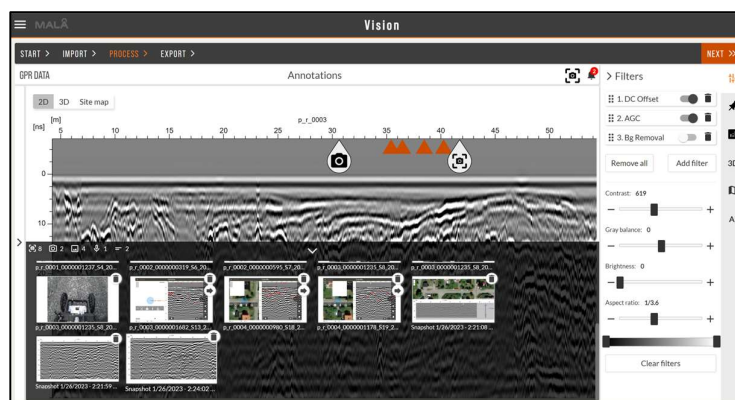
For both 2D, 3D and Site map a snapshot tool is available . When using this tool, the current workspace screen is saved as an image for easy use in a report or for export. All snapshots are viewed and retrieved in the lower part of the screen or in the Export/Report tab. When changing to Snapshots or Images (in the drop-down menu in the upper-left corner) more markers can be set, and a Free draw option is available, which can be used to enhance and mark features in the data.

Note: When you are finished adding markers and free drawings, remember to save another screenshot to keep the additions.

Use *Back* to go back to main view with 2D, 3D and Site Map views of radar data.

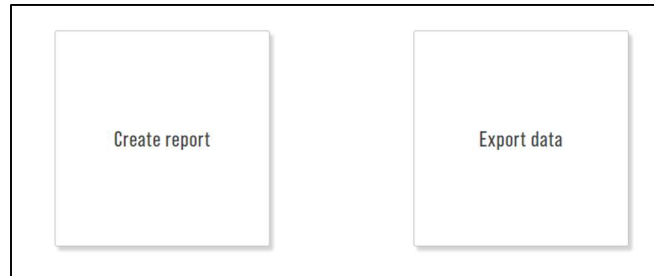


The snapshots are seen together with your annotations in the lower foldable menu.



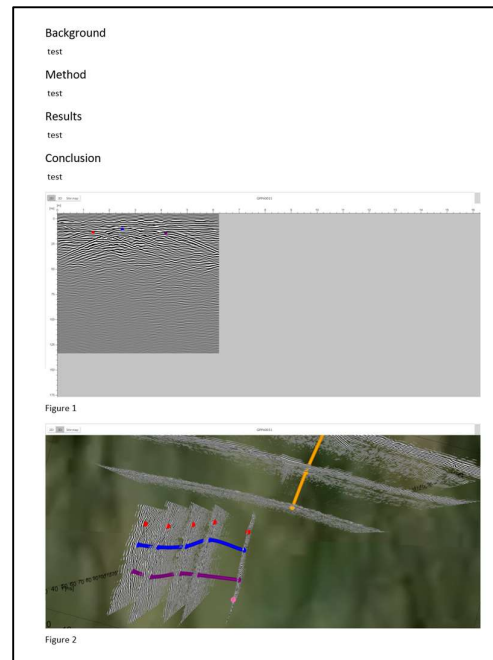
Report and Export

When you are ready with your interpolation and snapshots of the data, proceed to the Export tab. From this tab you can choose to either create a report, or to export data, interpretations, and images.



Create report

With the Create report tool you can add both snapshots and text to a standardized report template, which are compiled into a document for easy sharing with a contractor or customer. The report can be exported to PDF or Microsoft Word format.



Note: When choosing snapshots for the report, these are included at the bottom of the text.

Export data

The Export data option includes dynamic export of GPR data, Slices, Profile location, Markers, Polylines, Snapshots, Images etc. The interpretation can be exported as .txt, .csv, .dxf or as .kmz-files (used in e.g., Google Earth).

Use the + button to add additional exports items to the same zipped export folder. Select the folder where you want to save the export, by pressing *Select Folder*. You can also directly open that specific folder, by pressing *Open folder*.

I want to export...
Interpretation
Markers
as txt

+

Select folder
Open folder
C:\Users\jaa\Documents

Export

I want to export...
Slices
All slices
as png

I want to export...
GPR data
All GPR files
Original files

I want to export...
Interpretation
Markers & polyline nodes
as txt



+

Select folder
Open folder
C:\Users\jaa\Downloads

Export

The exported data will be exported to a zip-file with the same name as your project. If you export several different categories, these are stored in different sub-folders in the zip-file.

Txt- and csv-export

The dynamic txt- and csv-export of Interpretation and the option Markers&Polyline nodes contains information about the set markers. Press  to open the Export settings pop-up window. With  you can choose which parameters you wish to export; profile, type, symbol, longitude, latitude, depth (m), GPS-altitude (m), distance from start (m) and color. When clicking on each tab you can set a custom title and depending on the export type change parameters:

- For Coordinates you can choose the map projection to use in the drop-down menu. If you choose MALÅ Vision local, the interpretations will be exported into a local coordinate system (as displayed in the 3D view of MALÅ Vision).
- For Depth, GPS-altitude, and Distance from start you can set an offset.

Export settings

Profile	Type	Symbol	Trace	Sample	Coordinate 1	Coordinate 2	Depth	GPS-altitude	+
---------	------	--------	-------	--------	--------------	--------------	-------	--------------	---

Preview (First 4 rows)

Profile	Type	Symbol	Trace	Sample	Coordinate 1	Coordinate 2	Depth	GPS-altitude
p_r_0001	4	2	138	63	17.91611560	59.45831063	-0.27880224	15.38000000
p_r_0002	4	2	157	64	17.91610737	59.45829949	-0.28904688	15.38000000
p_r_0003	4	2	120	63	17.91610068	59.45828925	-0.27880224	15.39000000
p_r_0003	2	2	80	188	17.91606306	59.45828938	-1.51099389	15.33000000

CLOSE
SAVE & CLOSE

Export settings


:: Profile

:: Type

:: Symbol

:: Trace


:: Sample

:: Coordinate 1 

:: Coordinate 2

:: Depth

:: GPS-altitude



Type of property
Coordinate 1

Original unit
Longitude

Custom title
Coordinate 1

Projection
EPSG:4326 WGS 84

Preview (First 4 rows)


Profile	Type	Symbol	Trace	Sample	Coordinate 1	Coordinate 2	Depth	GPS-altitude
p_r_0001	0	2	542	0	17.91608071	59.45833887		
p_r_0001	0	2	722	184	17.91612477	59.45830562	-1.49142757	
p_r_0001	0	2	828	173	17.91615071	59.45828604	-1.38379510	
p_r_0001	0	2	916	0	17.91617225	59.45826979		

CLOSE
SAVE & CLOSE

Tabs (columns) are easily deleted by pressing  when you highlight the tab, as above.

Dxf-export


When exporting to dxf (choose Interpretation and option Markers&Polylines, Polylines, Markers/Polylines/Polygons or Profiles with gps altitude) the different marker types, polylines or profile lines will be exported into a single dxf-file with several different layers depending on type and color of the objects.

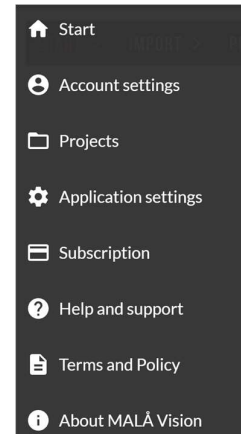
Note: Press  if you want to change the map projection used for export. By default, the dxf-export is made to WGS 84 /pseudo-mercator.

If you do not have any markers or polylines available, the dxf-export will only include the profile line location (without GPS altitude).

If you choose the option Interpretation and option Profiles with gps altitude, only the location of the profile is exported to a dxf-file, with the altitude (z-level).

Software settings

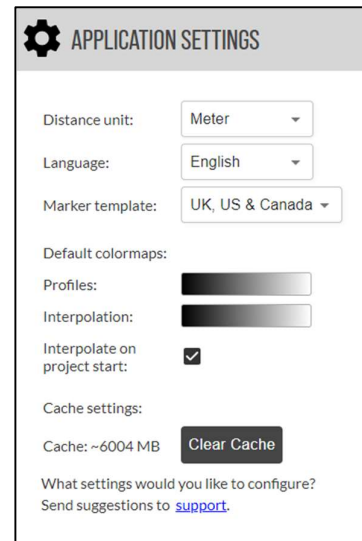
Account settings, application settings, subscription details etc. are found in the main menu, which is accessed by clicking the hamburger menu  at the top left corner.



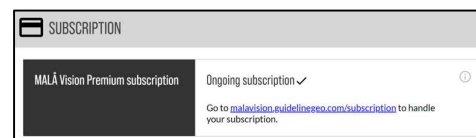
In the Application settings you can:

- Change distance unit
- Set marker template
- Set default color maps for profiles or interpolated volumes
- Decide if interpolation on your data should be carried out automatically from start
- Clear cache memory. Depending on the project you work with the Cache memory of MALÅ Vision Desktop can be quite large and it is advisable to clear this regularly.

Note: When the cache is cleared, interpolations for all projects are also removed. If you want to look at data in the 3D view, a new interpolation needs to be carried out.



In the Subscription settings you see the status of the subscription and find a link to handle the same.



Note: If you have larger projects you may want to uncheck the Interpolation box and check your processing and positioning information first.

The main menu also includes *Help and support*, with a form to communicate with Guideline Geo Support if needed and you are online. In the *About* menu, you find the software version number.